



NSW

Wenzhou Newsway Valve Co.,Ltd.
Professional Valves Manufacturer

Wenzhou Newsway Valve Co.,Ltd.

Add: Dongou Industrial Zone, Oubei Town, Wenzhou, Zhejiang, China(325105)

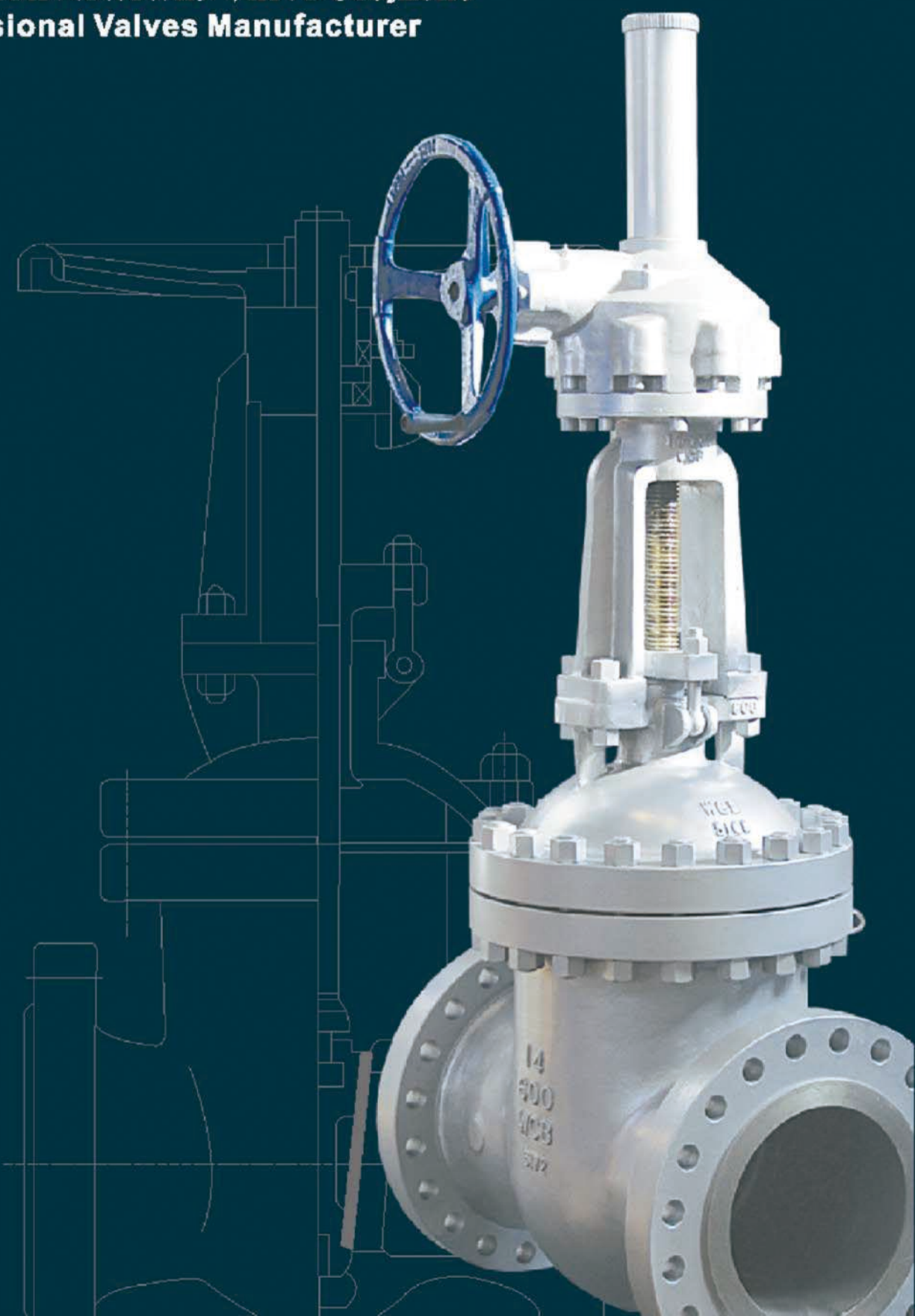
Tel: 0086-577-21820092

Fax: 0086-577-66995619

E-mail: sales@nswvalve.com info@nswvalve.com

Web: www.nswvalve.com

Skype: nswvalve



COMPANY PROFILE

Wenzhou Newsway Valve Co., LTD (NSW) specializes in the design and manufacture of industrial valves and has for more than 20 years, created a reputation of quality and economical products in global market.

NSW conducts scientific research, development, production, distribution and after sales service. It operates a multi-brand systematic management mode, creating customer convenience to enjoy one buying experience.

NSW provides a wide range of valves including Gate Valves, Globe Valves, Check Valves, Ball Valves, Plug Valve, Strainer, Forged Valves, Bellow Sealed Valves, Butterfly Valves, and Specialty Valves, which comply with the API 600, API 6D, API 607, CE, TS, ISO and other international standards. Our designs are specially made to give high degree reliability, sustainability, durability, and highest standards in the entire production process.

The innovative products are applied in gas, oil, refining, chemical, power generation and pipeline transmission industries. Our products are exported to over 40 countries e.g. USA, UK, Germany, Italy, Iran, UAE, Singapore, Brazil, South Africa, etc.

We have powerful technical capabilities, advanced production and inspection equipment, scientific management, high-quality products and perfect after-sales service. Our mission:

To ensure our products conform to quality assurance controls;

To ensure timely delivery of products and the expected quality of each supply;

To offer customized services and value addition to our customers;

To advance in design and manufacture of our products.



www.nswvalve.com

NSW

GATE VALVE

- SIZE: 1/2"-48"
- PRESSURE: Class150-Class2500
- Material: A 105, LF2, F11, SS304, SS316, MONEL, WCB, LCB, LCC, WC6, WC9, CF8, CF8M, CF3, CF3M, C5, etc.
- Design and manufacture standards: API 600, BS 1414, ASME B16.34
- Face to face standards: ASME B16.10
- End connections standards: ASME B16.5, ASME B16.25, ASME B16.47



GLOBE VALVE

- Size: NPS 1/2"~32"
- Rating: Class150~2500
- Material: WCB/A 105, LCB/LF2, LCC, WC6/F11, WC9, CF8/304, CF8M/316, CF3/304L, CF3M/316L, 4A/F 51, 5A
- Design and manufacture standards: BS 1873, ASME B16.34
- Face to face standards: ASME B16.10
- End connections standards: ASME B16.5, ASME B16.25, BS 4504
- Test standards: API 598, BS 6755, ISO 5208

FLOATING BALL VALVE

- Size: 1/2"-10".
- Pressure: Class150LB-600LB.
- Material: WCB/A105, LCB/LF2, CF8/304, CF8M/316, CF3/304L, CF3M/316L, etc.
- Design & Manufacture Std.: ASME B16.34, API608, API6D
- Fire Safe Std: API607, BS6755
- Face to Face Std.: ASME B16.10
- End Connection Std.: ASME B16.5, Mounting pad ISO5211.
- Test Standard: API598, API 6D,
- Structure: 2-piece Floating type, Full bore.
- Operation: Lever, Gear, pneumatic, actuator.



CHECK VALVE

- Size: NPS 2"-48"
- Rating: Class150-2500
- Material: WCB/A105, LCB/LF2, LCC, WC6/F11, WC9, CF8/304, CF8M/316, CF3/304L, CF3M/316L, 4A/F51, 5A
- Design and manufacture standards: API 6D, BS 1868, ASME B16.34
- Face to face standards: ASME B16.10
- End connections standards: ASME B16.5, ASME B16.25, ASME B16.47, BS 4504
- Test standards: API 598, API 6D, BS 6755, ISO 5208



MOUNTED BALL VALVE

- Size: 2"-48"
- Class: 150-2500
- Design & manufacture as per API6D.
- Ball Type: Trunnion mounted Port
- Type: Full Bore/Reduced Bore
- Material: A105, LF2, WCB, LCB, LCC, F304, F316, etc.
- Valve Seal: PTFE /RPTFE /NYLON/ PPL /PEEK /DEVLON / Metal seated.
- Operation: Lever/ Gear/ Actuator
- Fire safe / Anti static / Anti blow out / Bi-directional seal



PLUG VALVE

- Size: 1/2"- 48"
- Class: 150-1500
- Seal type: Sleeve / Lubricated / Jacket
- Materials: WCB/A105, LCB/LF2, CF8/304, CF3, CF3M and CF8M, ect
- Design: API 6D, 599 and ASME B16.34
- Face to face: ASME B16.10
- End connection: ASME B1.20.1, B16.5 and B16.25
- Operator: lever, gear, actuator

BELLOW SEAL VALVE

- Size: 1/2"-32"
- Class: 150-2500 / PN16-PN100
- Design and Manufacture: DIN3356, BS160, BS5160 or API602
- Face to Face Dimension: DIN3202 or ANSI B16.10
- Flanged Dimension: DIN2543-2545 or ANSI B16.5
- Socketed Ends to ANSI B16.11
- Inspection and Test: DIN3230, API 598, MSS SP-117



BUTTERFLY VALVES

- SIZE: 1/2"-64"
- PRESSURE: 150-300
- Material: Cast Iron, Ductile Iron, Carbon Steel, Stainless Steel, Alu-Bronze, Ni-Alu-Bronze, etc.
- Design and manufacture standards: API 609, ASME B16.34, etc
- Face to face standards: ASME B16.10, etc
- End connections standards: ASME B16.5, etc



FORGED VALVES

- SIZE: 1/2"-2"
- PRESSURE: 150-2500
- Material: A105, LF2, F11, F22, SS304, SS316, MONEL, F5, BRASS, BRONZE, F91, INCONEL, etc.
- Design and manufacture standards: API 602, BS 5352, ASME B16.34
- Face to face standards: ASME B16.10
- End connections standards: ASME B16.5, ANSI B1.20.1, ASME B16.11, ASME B16.25, ASME B16.47



FLAT GATE VALVE

- SIZE: 2"-48"
- PRESSURE: Class 150-Class 2500
- Material: on customer request
- Design Standard: API 6D, ANSI B16.34, ANSI B16.5, DIN

STRAINER

