

欢迎登陆泉舜公司网站
www.qslk.cn

GB Check Valve Series

国标止回阀系列

Keeping pace with the times
Reviving upon science & technology
与时俱进 / 科技兴业……



泉舜流控
QUANSHUN FLOW CONTROL

旋启式止回阀 Swing type check valve



泉舜流控
QUANSHUN FLOW CONTROL



铸钢旋启式止回阀的结构特征/Structure characteristics

大口径的止回阀设计有吊环，方便起吊。
Large diameter check valves are provided with lifting rings for the convenience of hoisting.

栓接阀盖，中法兰垫片的型式可根据压力等级的不同进行选择；Class600的止回阀可采用压力自紧密封结构。

Bolted bonnet, and the type of middle flange gasket may be chosen according to pressure class ;Class600 check valve may adopt pressure self-tightening seal structure.

阀瓣限位装置，防止阀瓣打开位置过高而无法关闭。

Disc stop device to prevent disc from being opened too high.

实心销轴安装精确，强度高，保证了阀门的使用性能和使用奉命。

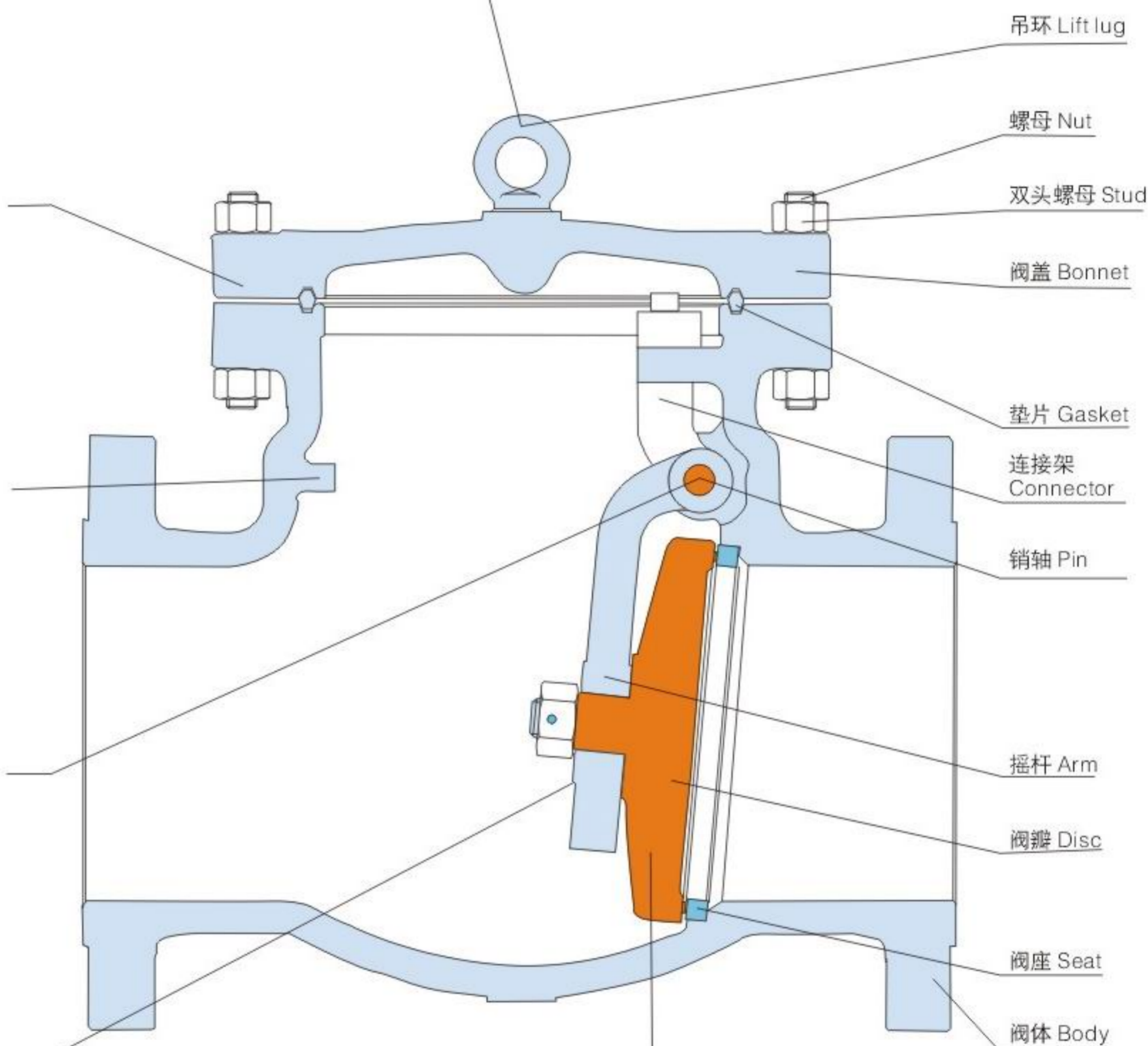
Solid pin is precisely installed and provided with high intensity to ensure operational performance and service life of valve.

摇杆具有足够的强度，关闭时有足够的自由度以利于阀瓣关闭。

Arm is given enough intensity. Upon being closed, it has enough freedom for the close valve disc.

阀瓣具有足够的强度和刚度，阀瓣密封面可根据用户要求堆焊金属覆层或镶嵌非金属材料。

Valve disc is given enough intensity and up welded with metal material or inlaid rigidity. Disc sealing surface may be built-with nonmetal material according to users' requests.



提示：1、端部连接形式见附录 I
2、阀体、阀盖连接形式见附录 VII
3、阀体与阀座连接形式见附录 VII

Remark: 1、Type of end connection is shown at appendix I
2、Type of body and bonnet connection is shown at appendix VII
4、Type of body and seat connection is shown at appendix VII



† 铸钢旋启式止回阀的材料明细/Material list of cast steel swing type check valve

GB标准材料 (GB Standard material)

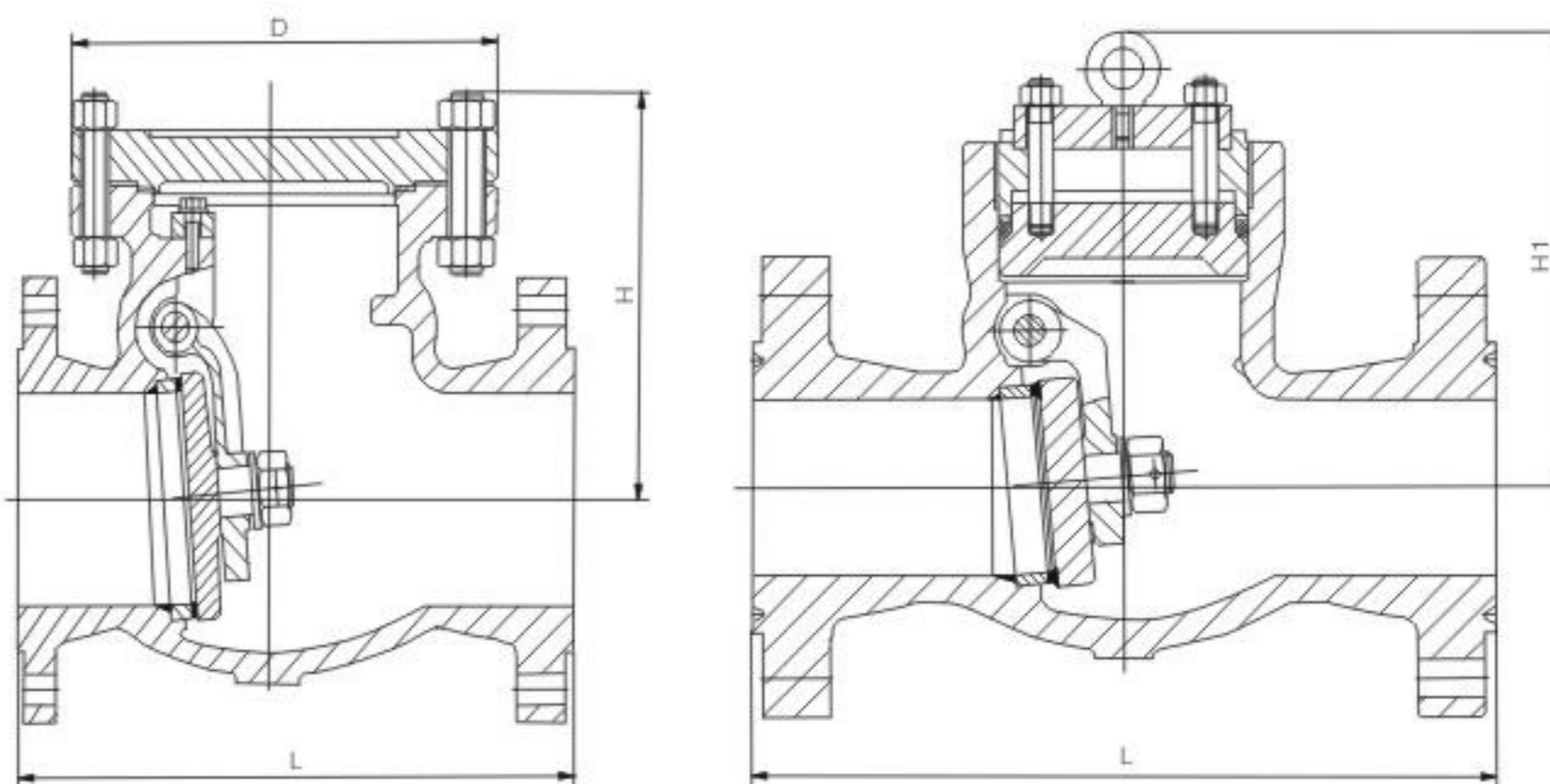
序号 No	零件名称 Part name	碳钢系列 Carbon steel	不锈钢系列 Stainless steel	合金钢系列 Alloy steel	低温钢系列 Low temperature steel
1	阀体 Body	WCB	Cf8	Wc6	LCB
2	阀座 Seat	25#	0Cr18Ni9(304)	0Cr18Ni9(304)	0Cr18Ni9(304)
3	阀瓣 Disk	WCB	CF8	Wc6	LCB
4	摇杆 Arm	WCB	Cf8	Wc6	LCB
5	销轴 Pin	1Cr13	0Cr18Ni9(304)	0Cr18Ni9(304)	0Cr18Ni9(304)
6	连接架 Connector	WCB	Cf8	Wc6	LCB
7	垫片 Gasket	柔性石墨+SS304 Graphite+SS304			
8	阀盖 Bonnet	WCB	Cf8	Wc6	LCB
9	双头螺柱 Stud	35CrMoA	0Cr18Ni9(304)	35CrMoA	0Cr18Ni9(304)
10	螺母 Eyebolt nut	35#	0Cr18Ni9(304)	35CrMoA	0Cr18Ni9(304)

ASTM标准材料 (ASTM Standard material)

序号 No	零件名称 Part name	碳钢系列 Carbon steel	不锈钢系列 Stainless steel	合金钢系列 Alloy steel	低温钢系列 Low temperature steel
1	阀体 Body	ASTM A216 GR WCB	ASTM A351 GR Cf8	ASTM A217 GR Wc6	ASTMA352 GR LCB
2	阀座 Seat	ASTM A105	ASTM A105	ASTM A182 GR F304	ASTMA182 GR F304
3	阀瓣 Disk	ASTM A216 GR WCB	ASTMA351 GR Cf8	ASTM A217 GR Wc6	ASTMA352 GR LCB
4	摇杆 Arm	ASTM A216 GR WCB	ASTMA351 GR Cf8	ASTM A217 GR Wc6	ASTMA352 GR LCB
5	销轴 Pin	ASTM A182 GR F6a	ASTMA276 TYPE 304	ASTM A182 GR F304	ASTMA182 GR F304
6	连接架 Connector	ASTM A216 GR WCB	ASTMA351 GR Cf8	ASTM A217 GR Wc6	ASTMA352 GR LCB
7	垫片 Gasket	柔性石墨+SS304 Graphite+SS304			
8	阀盖 Bonnet	ASTM A216 GR WCB	ASTMA351 GR Cf8	ASTM A217 GR Wc6	ASTM A352GR LCB
9	双头螺柱 Stud	ASTM A193 GR B7	ASTM A194 GR B8	ASTM A193 GR B7	ASTM A194 GR B8
10	螺母 Eyebolt nut	ASTM A194 GR 2H	ASTM A193 GR8	ASTM A194 Gr4	ASTM A193 Gr8

† 技术性能规范/Technical standard

设计标准 Design standard	GB/T12235						BS1868							
压力温度等级 Pressure-temperature rating	GB/T12224						ASME B16.34							
结构长度 Face to face dimension	GB/T12221、GB/T 15188.1						ASME B16.10							
法兰型式尺寸 Flange type	GB/T9113、JB/T79						ASME B16.5、ASME B16.47							
对焊端连接 Buttwelded connection	GB/T12224						ASME B16.25							
检验与试验 Inspection & test	JB/T9092、GB/T 3927						API598							
公称压力 Nominal pressure	PN1.6	PN2.5	PN4.0	PN6.4	PN10.0	PN16.0	Cl150	Cl300	Cl400	Cl600	Cl900	Cl1500		
试验压力 (MPa) Test pressure	壳体试验 Shell test	2.4	3.75	6.0	9.6	15.0	24.0	2.93	7.58	10.0	15.0	22.4	22.4	
	高压密封试验 High pressure seal test	1.76	2.75	4.4	7.04	11.0	17.6	2.07	5.52	7.31	11.03	16.54	16.54	
	低压密封试验 Low pressure seal test	0.6	0.6	0.6	0.6	0.6	0.6	0.6	0.6	0.6	0.6	0.6	0.6	
适用温度 Applicable temperature	-196℃~550℃(不同的工况温度选用不同的材质) Different material for different work temperature													
适用介质 Applicable medium	水、油、气及各类腐蚀性介质 (不同的介质选用有同的材质) Water、oil、gas and other causticity medium(Different material for different medium)													



GB系列
压力 Pressure: PN1.6-25

- PN ≤ 10.0MPa 栓接阀盖
- PN > 10.0MPa 压力密封阀盖

- ≤ PN 10.0MPa Bolted bonnet
- > PN 10.0MPa Pressure sealed bonnet

主要外形尺寸和重量/Main outline dimensions & weight

压力 Pressure	规格 Size	mm	50	65	80	100	125	150	200	250	300	350	400	500
PN1.6	阀门尺寸 Main dimension		230	290	310	350	400	480	550	650	750	850	950	1150
		D	160	180	195	215	245	280	335	405	460	520	580	705
		H	160	177	187	202	227	263	293	330	382	430	480	560
	重量 Weight(kg)		22	26	33	39	57	80	95	175	260	360	496	588
	Cv		-	-	300	510	-	1229	2246	3514	5248	6750	8859	14590
PN2.5	阀门尺寸 Main dimension	L	230	290	310	350	400	480	550	650	750	850	950	1150
		D	160	180	195	215	245	300	360	425	485	550	610	730
		H	160	177	187	202	227	263	293	330	382	430	480	560
	重量 Weight(kg)		22	30	35	52	73	103	135	196	286	389	495	641
	Cv		-	-	300	510	-	1229	2246	3514	5248	6750	8859	14590
PN4.0	阀门尺寸 Main dimension	L	230	290	310	350	400	480	550	650	750	850	950	1150
		D	185	210	235	260	295	330	385	445	545	570	625	730
		H	177	192	192	217	259	270	340	401	423	460	490	618
	重量 Weight(kg)		22	30	38	57	91	129	212	297	362	450	585	640
	Cv		-	-	300	510	-	1229	2246	3514	5248	6750	8859	14590
PN6.4	阀门尺寸 Main dimension	L	300	340	380	430	500	550	650	775	900	1025	1150	1400
		D	200	225	250	315	365	410	480	565	600	615	675	735
		H	192	207	207	235	265	297	357	405	465	514	568	620
	重量 Weight(kg)		30	41	48	72	108	155	217	341	472	627	882	1027
	Cv		-	-	300	510	-	1229	2246	3514	5248	6750	8859	14590
PN10.0	阀门尺寸 Main dimension	L	300	340	380	430	500	550	650	775	-	-	-	-
		D	200	225	260	295	335	425	450	535	-	-	-	-
		H	192	207	235	265	313	360	420	480	-	-	-	-
	重量 Weight(kg)		30	41	52	78	119	161	216	473	-	-	-	-
	Cv		-	-	300	510	-	1229	2246	3514	-	-	-	-
PN16.0	阀门尺寸 Main dimension	L	300	340	380	430	500	550	650	750	-	-	-	-
		H1	250	283	320	356	362	430	470	515	-	-	-	-
	重量 Weight(kg)		49	58	110	162	214	267	318	370	-	-	-	-
	Cv		-	-	300	510	-	1229	2246	3514	-	-	-	-
PN25.0	阀门尺寸 Main dimension	L	368	419	470	546	673	705	832	991	-	-	-	-
		H1	310	346	385	406	534	560	618	673	-	-	-	-
	重量 Weight(kg)		63	78	92	168	220	270	320	390	-	-	-	-
	Cv		-	-	300	510	-	1229	2246	3514	-	-	-	-

升降式止回阀 Lift type check valve



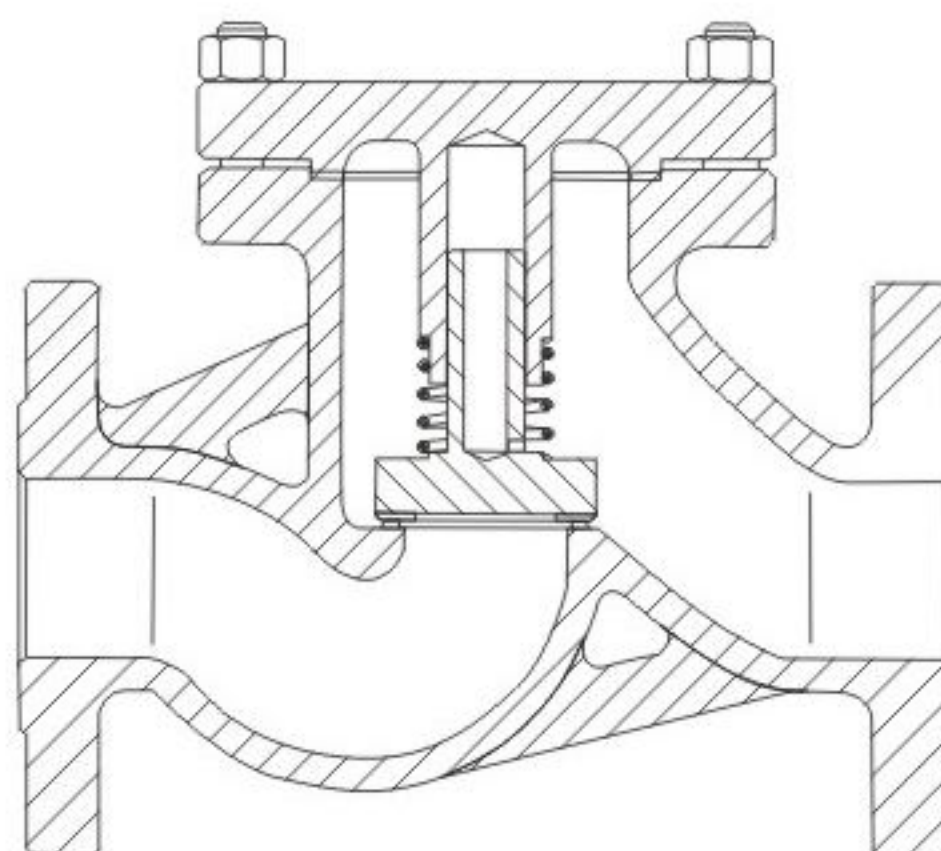
泉舜流控
QUANSHUN FLOW CONTROL



升降式止回阀供货范围/Lift type check valve product

规格 Size DN	压力 Pressure					
	PN16	PN25	PN40	PN64	PN100	PN160
32			*			*
40			*			*
50	*	*	*			*
65	*	*	*			*
80	*	*	*			*
100	*	*	*			*
125	*	*	*			*
150	*	*	*			*
200	*	*	*			*

欲订购表中未列出的产品可与本公司销售部门联系。
For sizes and classes not shown, please contact our sales department



升降式止回阀的材料明细/Material list of lift type check valve

GB标准材料 (GB Standard material)

序号 No	零件名称 Part name	碳钢系列 Carbon steel	不锈钢系列 Stainless steel	合金钢系列 Alloy steel	低温钢系列 Low temperature steel
1	阀体 Body	WCB	CF8	WC6	LCB
2	阀瓣 Disc	WCB	CF8	WC6	LCB
3	垫片 Gasket	柔性石墨+SS304 Graphite+SS304			
4	阀盖 Bonnet	WCB	CF8	WC6	LCB
5	双头螺柱 Stud	35CrMoA	0Cr18Ni9(304)	35CrMoA	0Cr18Ni9(304)
6	螺母 Nut	35#	0Cr18Ni9(304)	35CrMoA	0Cr18Ni9(304)
7	弹簧 Spring	60Si2Mn	0Cr18Ni9(304)	0Cr18Ni9(304)	0Cr18Ni9(304)

提示: 1、壳体材料压力温度等级表见附录XII
2、壳体材料化学成分及力学性能见附录XI
3、内件材料及推荐服务范围见附录XIII

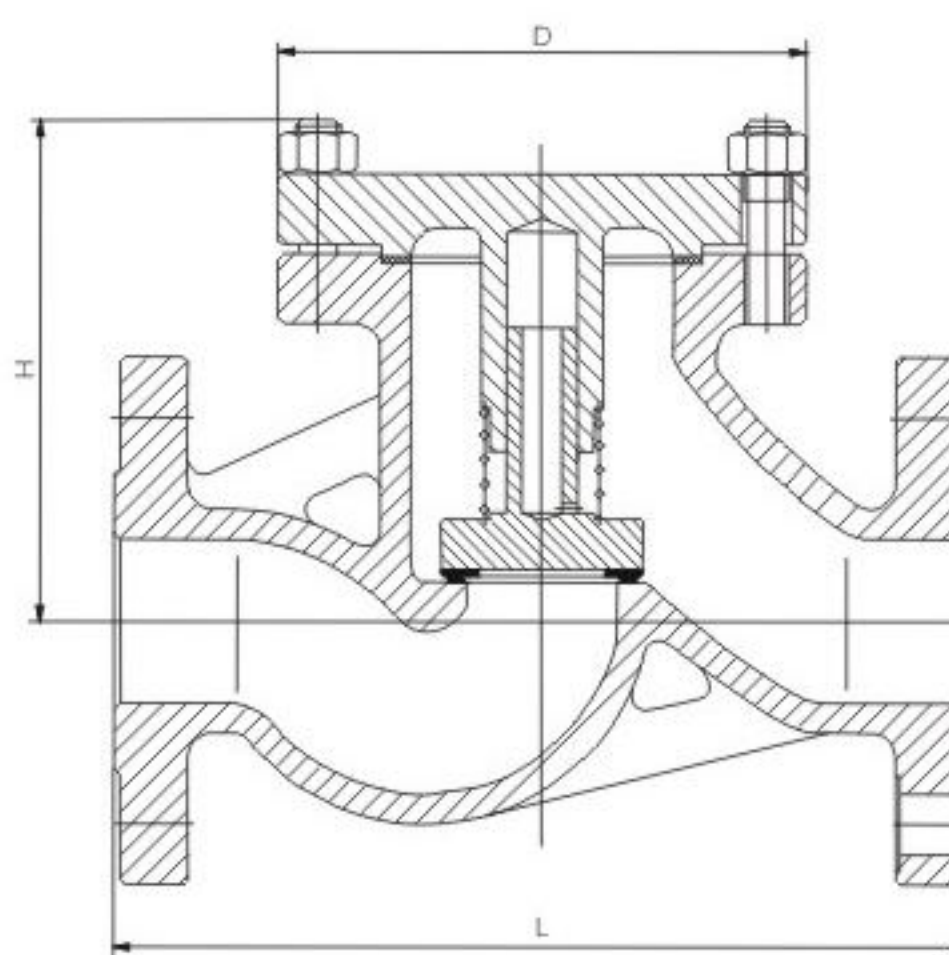
Remark: 1、Pressure and temperature rating of casing material is shown at appendix XII
2、Chemical compositions and mechanical property of casing material is shown at appendix XI
3、Trim materials and recommended service coverage is shown at appendix XIII

技术性能规范/Technical specification

设计标准 Design standard	GB/T 12235						
压力温度等级 Pressure-temperature rating	GB/T12224						
结构长度 Face to face dimension	工厂标准 Factory standard						
法兰型式尺寸 Flange type	GB/T9113、JB/T79						
检验与试验 Inspection & test	JB/T9092、GB/T13927						
公称压力 Nominal pressure	PN1.6	PN2.5	PN4.0	PN6.4	PN10.0	PN16.0	
试验压力 (MPa) Test pressure	壳体试验 Shell test	2.4	3.75	6.0	9.6	15.0	24.0
	高压密封试验 High pressure seal test	1.76	2.75	4.4	7.04	11.0	17.6
	低压密封试验 Low pressure seal test	0.6	0.6	0.6	0.6	0.6	0.6
适用温度 Applicable temperature	-196°C~550°C(不同的工况温度选用不同的材质) Different material for different work temperature						
适用介质 Applicable medium	水、油、气及各类腐蚀性介质 (不同的介质选用有同的材质) Water, oil, gas and other causticity medium(Different material for different medium)						



压力Pressure: PN1.6-PN16.0



† 主要外形尺寸和重量/Main outline dimensions & weight

压力 Pressure	规格 Size	mm	32	40	50	65	80	100	125	150	200
PN1.6	阀门尺寸 Main dimension	LRF	180	200	230	290	310	350	400	480	600
		D	130	150	160	175	200	235	285	300	400
		H	120	140	115	140	170	200	230	255	285
	重量 Weight(kg)	-	-	19	24	29	40	58	83	100	
Cv	-	-	-	-	105	189	381	428	798		
PN2.5	阀门尺寸 Main dimension	LRF	180	200	230	290	310	350	400	480	600
		D	130	150	160	175	200	235	285	320	400
		H	120	140	115	140	170	200	232	262	285
	重量 Weight(kg)	-	-	19	24	29	40	72	104	145	
Cv	-	-	-	-	105	189	381	428	798		
PN4.0	阀门尺寸 Main dimension	LRF	180	200	230	290	310	350	400	480	600
		D	130	150	160	180	200	235	265	320	400
		H	120	140	150	160	175	200	225	262	315
	重量 Weight(kg)	9	12	15	20	33	41	73	104	147	
Cv	-	-	-	-	105	189	381	428	798		
PN6.4	阀门尺寸 Main dimension	LRF	230	260	300	340	380	430	500	550	600
		D	140	160	175	200	230	250	300	340	410
		H	162	168	170	188	205	230	265	310	350
	重量 Weight(kg)	12	20	29	35	47	68	100	142	195	
Cv	-	-	-	-	105	189	381	428	798		
PN10.0	阀门尺寸 Main dimension	LRF	230	260	300	340	380	430	500	550	600
		D	140	160	175	200	230	250	300	350	430
		H	140	155	170	190	235	265	310	350	400
	重量 Weight(kg)	12	20	29	42	63	88	100	120	145	
Cv	-	-	-	-	105	189	381	428	798		

对夹双瓣式止回阀 Double-disc wafer type check valve

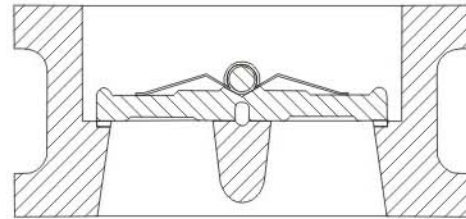


泉舜流控
QUANSHUN FLOW CONTROL



对夹双瓣式止回阀供货范围 Double-disc wafer type check valve product

规格 Size		压力 Pressure															
		GB系列(PN)								API系列(Class)							
DN	NPS	1.0	1.6	2.5	4.0	6.4	10.0	16.0	20.0	25.0	150	300	600	900	1500	2500	
50	2	*	*	*	*	*	*	*	*	*	*	*	*	*	*	*	
65	2-1/2	*	*	*	*	*	*	*	*	*	*	*	*	*	*	*	
80	3	*	*	*	*	*	*	*	*	*	*	*	*	*	*	*	
100	4	*	*	*	*	*	*	*	*	*	*	*	*	*	*	*	
125	5	*	*	*	*	*	*	*	*	*	*	*	*	*	*	*	
150	6	*	*	*	*	*	*	*	*	*	*	*	*	*	*	*	
200	8	*	*	*	*	*	*	*	*	*	*	*	*	*	*	*	
250	10	*	*	*	*	*	*	*	*	*	*	*	*	*	*	*	
300	12	*	*	*	*	*	*	*	*	*	*	*	*	*	*	*	
350	14	*	*	*	*	*	*	*	*	*	*	*	*	*	*	*	
400	16	*	*	*	*	*	*	*	*	*	*	*	*	*	*	*	
450	18	*	*	*	*	*	*	*	*	*	*	*	*	*	*	*	
500	20	*	*	*	*	*	*	*	*	*	*	*	*	*	*	*	
600	24	*	*	*	*	*	*	*	*	*	*	*	*	*	*	*	
650	26	*	*	*	*	*	*	*	*	*	*	*	*	*	*	*	
700	28	*	*	*	*	*	*	*	*	*	*	*	*	*	*	*	
750	30	*	*	*	*	*	*	*	*	*	*	*	*	*	*	*	
800	32	*	*	*	*	*	*	*	*	*	*	*	*	*	*	*	
900	36	*	*	*	*	*	*	*	*	*	*	*	*	*	*	*	
1000	40	*	*	*	*	*	*	*	*	*	*	*	*	*	*	*	
1050	42	*	*	*	*	*	*	*	*	*	*	*	*	*	*	*	
1200	48	*	*	*	*	*	*	*	*	*	*	*	*	*	*	*	



主要零件材料/Material list for main parts

GB标准材料 (GB Standard material)

序号 No	零件名称 Part name	碳钢系列 Carbon steel	不锈钢系列 Stainless steel	合金钢系列 Alloy steel
1	阀体 Body	WCB	Cf8	Wc6
2	阀瓣 Disc	Cf8	Cf8	Cf8
3	弹簧 Spring	0Cr18Ni9	0Cr18Ni9	0Cr18Ni9
4	轴 Shaft	1Cr13	0Cr18Ni9	0Cr18Ni9

ASTM标准材料 (ASTM Standard material)

序号 No	零件名称 Part name	碳钢系列 Carbon steel	不锈钢系列 Stainless steel	合金钢系列 Alloy steel
1	阀体 Body	A216 WCB	A351 Cf8	A217 Wc6
2	阀瓣 Disc	A351 Cf8	A351 Cf8	A351 Cf8
3	弹簧 Spring	A182 F304	A182 F304	A182 F304
4	轴 Shaft	A182 F6a	A182 F304	A182 F304

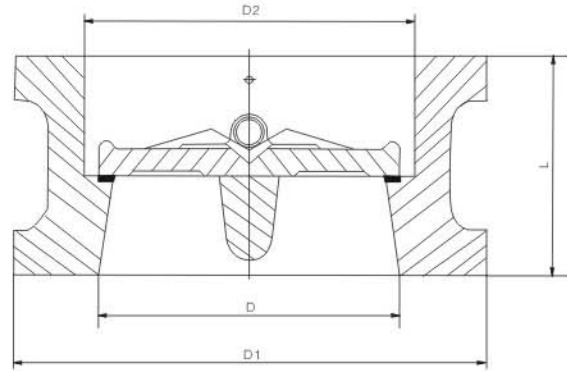
订购表中未列出的产品可与本公司销售部门联系。
For sizes and classes not shown, please contact our sales department

技术性能规范/Technical specification

设计标准 Design standard	GB/T12221	API6D、API594
压力温度等级 Pressure-temperature rating	GB/T12224	ASME B16.34
结构长度 Face to face dimension	工厂标准 Factory standard	API6D、API594
法兰型式尺寸 Flange type	GB/T9113、JB/T79	ASME B16.5、ASME B16.47
检验与试验 Inspection & test	JB/T9092、GB/T13927	API598、API6D
公称压力 Nominal pressure	PN1.0 PN1.6 PN2.5 PN4.0 PN6.4 PN10.0 PN16.0 PN20.0 PN25.0	Cl150 Cl300 Cl600 Cl900 Cl1500 Cl2500
试验压力 (MPa) Test pressure	壳体试验 Shell test	2.0 2.4 3.75 6.0 9.6 15.0 24.0 30.0 37.5 2.93 7.55 10.0 15.0 37.5 63.0
	高压密封试验 High pressure seal test	1.1 1.76 2.75 4.4 7.04 11.0 17.6 22.0 27.5 2.07 5.52 7.31 11.03 27.5 46.2
	低压密封试验 Low pressure seal test	0.6 0.6 0.6 0.6 0.6 0.6 0.6 0.6 0.6 0.6 0.6 0.6 0.6 0.6 0.6
适用温度 Applicable temperature	-196℃~550℃(不同的工况温度选用不同的材质) Different material for different work temperature	
适用介质 Applicable medium	水、油、气及各类腐蚀性介质 (不同的介质选用有同的材质) Water, oil, gas and other causticity medium(Different material for different medium)	



压力 Pressure: PN1.0~10.0



主要外形尺寸和重量/Main outline dimensions & weight

压力 Pressure	规格 Size		阀门尺寸 Valve main dimension				重量 Weight (kg)	CV
	mm	in	L	D	D1	D2		
PN1.0	50	2	60	51	108	56	2	49
	65	2-1/2	67	65	128	73	3	130
	80	3	73	80	142	88	4	158
	100	4	73	102	162	108	6	386
	125	5	86	127	192	132	8	817
	150	6	98	152	218	160	13	888
	200	8	127	203	273	210	24	1566
	250	10	146	254	328	266	37	3248
	300	12	181	305	378	310	50	3862
	350	14	184	350	438	355	76	5627
	400	16	191	400	489	405	110	8489
	450	18	203	450	539	455	135	10763
	500	20	219	500	594	505	158	14572
	600	24	222	600	696	605	320	27006
PN1.6	700	28	305	695	811	700	380	34136
	800	32	305	796	918	800	560	48669
	900	36	368	898	1018	903	640	56777
	1000	40	432	1050	1124	1055	900	81395
	1200	48	524	1200	1340	1205	1400	115388
	50	2	60	51	108	56	2	49
	65	2-1/2	67	65	128	73	3	130
	80	3	73	80	142	88	4	158
	100	4	73	102	162	108	6	386
	125	5	86	127	192	132	8	817
	150	6	98	152	218	160	13	888
	200	8	127	203	273	210	24	1566
	250	10	146	254	329	266	37	3248
	300	12	181	305	384	310	50	3862
350	14	184	350	444	355	76	5627	
400	16	191	400	496	405	110	8489	
450	18	203	450	556	455	135	10763	
500	20	219	500	618	505	158	14572	
600	24	222	600	732	605	320	27006	
700	28	305	695	802	700	380	34136	
800	32	305	796	912	800	560	48669	
900	36	368	898	1012	903	640	56777	
1000	40	432	1050	1126	1055	900	81395	
1200	48	524	1200	1340	1205	1400	115388	

对夹双瓣式止回阀 Double-disc wafer type check valve



泉舜流控
QUANSHUN FLOW CONTROL

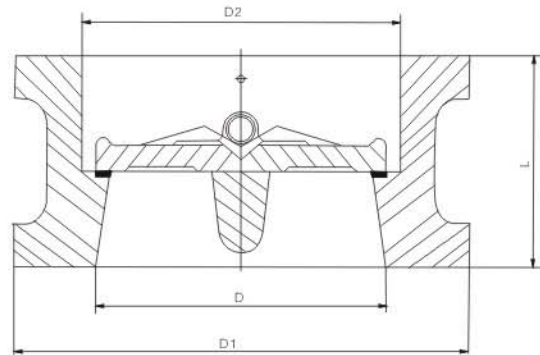


主要外形尺寸和重量/Main dimensions&weight

压力 Pressure	规格 Size		阀门尺寸 Valve main dimension				重量 Weight (kg)	CV
	mm	in	L	D	D1	D2		
PN2.5	50	2	60	51	108	56	2	49
	65	2-1/2	67	65	128	73	3	130
	80	3	73	80	142	88	4	158
	100	4	73	102	168	108	6	386
	125	5	86	127	194	132	8	817
	150	6	98	152	224	160	14	888
	200	8	127	203	284	210	27	1566
	250	10	146	254	341	266	42	3248
	300	12	181	305	401	310	54	3862
	350	14	184	350	458	355	86	5627
	400	16	191	400	515	405	120	8489
	450	18	203	450	565	455	148	10763
	500	20	219	500	622	505	165	14572
	600	24	222	600	732	605	340	27006
	700	28	305	695	831	700	400	34136
	800	32	305	796	942	800	580	48669
900	36	368	898	1040	903	660	56777	
1000	40	432	1050	1155	1055	960	81395	
1200	48	524	1200	1365	1205	1440	115388	
PN4.0	50	2	60	51	108	58	3	49
	65	2-1/2	67	65	128	73	4	130
	80	3	73	80	142	88	6	158
	100	4	73	102	168	108	8	386
	125	5	86	127	194	132	13	817
	150	6	98	152	224	160	16	888
	200	8	127	203	291	210	28	1566
	250	10	146	254	353	266	49	3248
	300	12	181	305	418	310	76	3862
	350	14	222	350	475	355	114	5627
	400	16	232	400	547	405	190	8489
	450	18	264	450	572	455	200	10763
	500	20	292	500	626	505	260	14572
600	24	318	600	745	608	404	27006	
PN6.3	50	2	60	51	114	58	4	49
	65	2-1/2	67	65	138	73	5	130
	80	3	73	80	148	88	7	158
	100	4	73	102	174	108	10	386
	125	5	79	127	211	132	16	817
	150	6	105	152	248	160	20	888
	200	8	136	200	310	210	38	1566
	250	10	165	250	362	266	62	3248
	300	12	213	305	422	310	100	3862
	350	14	229	350	487	355	160	5627
	400	16	305	400	541	405	260	8489
PN10.0	50	2	60	51	120	58	5	49
	65	2-1/2	67	65	144	73	7	130
	80	3	73	80	154	88	10	158
	100	4	73	102	181	108	12	386
	125	5	79	127	218	132	19	817
	150	6	105	152	258	160	25	888
	200	8	136	200	324	210	56	1566
	250	10	165	250	392	266	94	3248
	300	12	213	305	456	310	142	3862
	350	14	229	350	510	355	230	5627
400	16	305	400	570	405	366	8489	



压力 Pressure: PN16.0~25.0



主要外形尺寸和重量/Main outline dimensions & weight

压力 Pressure	规格 Size		阀门尺寸 Valve main dimension				重量 Weight (kg)	CV
	mm	in	L	D	D1	D2		
PN16.0 JB法兰 (JB Flange)	50	2	70	51	142	56	8	49
	65	2-1/2	83	65	162	73	11	130
	80	3	83	80	176	90	16	158
	100	4	102	102	208	108	19	386
	125	5	110	127	247	136	33	817
	150	6	159	150	280	162	40	888
	200	8	206	203	356	212	84	1566
	250	10	241	250	435	266	146	3248
PN16.0 GB、HG法兰 (GB、HG Flange)	50	2	70	51	120	56	7	49
	65	2-1/2	83	65	144	73	10	130
	80	3	83	80	154	90	14	158
	100	4	102	102	181	108	17	386
	125	5	110	127	218	136	28	817
	150	6	159	152	258	162	36	888
	200	8	206	203	325	212	78	1566
	250	10	241	254	389	266	130	3248
PN20.0	50	2	70	51	136	56	8	49
	65	2-1/2	83	65	174	73	16	130
	80	3	83	80	198	90	22	158
	100	4	102	102	254	108	35	386
	125	5	110	127	280	136	50	817
	150	6	159	152	316	162	78	888
	200	8	206	203	390	212	120	1566
	250	10	248	254	518	266	220	3248
PN25.0	50	2	70	51	124	56	8	49
	65	2-1/2	83	65	154	73	14	130
	80	3	83	80	171	90	20	158
	100	4	102	102	203	108	28	386
	125	5	110	127	243	136	44	817
	150	6	159	152	285	162	70	888
	200	8	206	203	359	212	110	1566
	250	10	248	254	443	266	200	3248
300	12	305	305	540	312	350	3862	

对夹升降式止回阀 Wafer type lift check valve

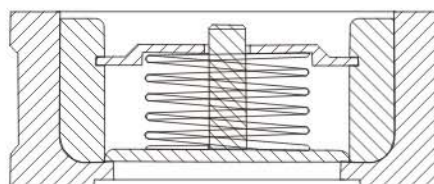


泉舜流控
QUANSHUN FLOW CONTROL

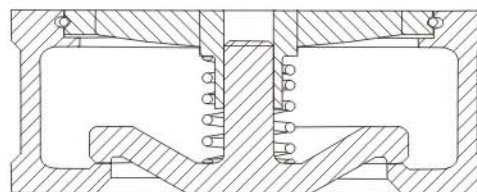


对夹升降式止回阀供货范围 Wafer type lift check valve product

规格 Size		压力 Pressure										
		GB系列(PN)						API系列(Class)				
DN	NPS	1.0	1.6	2.5	4.0	6.4	10.0	16.0	150	300	600	900
15	1/2	*	*	*	*	*	*	*	*	*	*	*
20	3/4	*	*	*	*	*	*	*	*	*	*	*
25	1	*	*	*	*	*	*	*	*	*	*	*
32	1-1/4	*	*	*	*	*	*	*	*	*	*	*
40	1-1/2	*	*	*	*	*	*	*	*	*	*	*
50	2	*	*	*	*	*	*	*	*	*	*	*
65	2-1/2	*	*	*	*	*	*	*	*	*	*	*
80	3	*	*	*	*	*	*	*	*	*	*	*
100	4	*	*	*	*	*	*	*	*	*	*	*
125	5	*	*	*	*	*	*	*	*	*	*	*
150	6	*	*	*	*	*	*	*	*	*	*	*
200	8	*	*	*	*	*	*	*	*	*	*	*



DN ≤ 100



DN ≥ 125

订购表中未列出的产品可与本公司销售部门联系。
For sizes and classes not shown, please contact our sales department

升降式止回阀的材料明细/Material list of lift type check valve

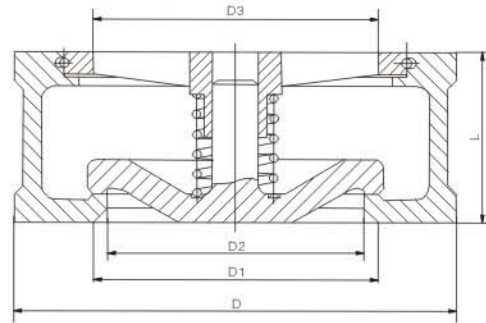
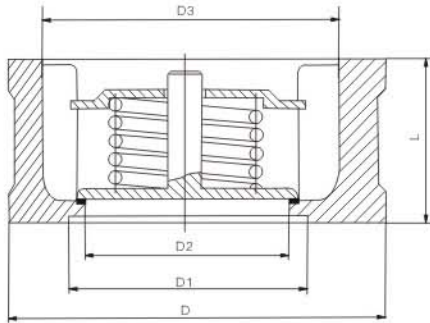
序号 No	零件名称 Part name	GB标准材料 (GB Standard material)			ASTM 标准材料 (ASTM Standard material)		
		碳钢系列 Carbon steel	不锈钢系列 Stainless steel	合金钢系列 Alloy steel	碳钢系列 Carbon steel	不锈钢系列 Stainless steel	合金钢系列 Alloy steel
1	阀体 Body	WCB	CF8	WC6	A216 WCB	A351CF8	A217Wc6
2	阀瓣 Disc	CF8	CF8	CF8	A351CF8	A351CF8	A351CF8
3	弹簧 Spring	0Cr18Ni9 (304)	0Cr18Ni9 (304)	0Cr18Ni9 (304)	A182 F304	A182 F304	A182 F304
4	压板 Plate	WCB	CF8	WC6	A182 F6a	A182 F304	A182 F304
5	挡圈 Locking	0Cr18Ni9 (304)	0Cr18Ni9 (304)	0Cr18Ni9 (304)	A182 F304	A182 F304	A182 F304

技术性能规范/Technical specification

设计标准 Design standard	GB/T12221	API6D, API594										
压力温度等级 Pressure-temperature rating	GB/T12224	ASME B16.34										
结构长度 Face to face dimension	工厂标准 Factory standard	API6D, API594										
法兰型式尺寸 Flange type	GB/T9113、JB/T79	ASME B16.5、ASME B16.47										
检验与试验 Inspection & test	JB/T9092、GB/T13927	API598, API6D										
公称压力 Nominal pressure	PN1.0	PN1.6	PN2.5	PN4.0	PN6.4	PN10.0	PN16.0	CI150	CI300	CI600	CI900	
试验压力 (MPa) Test pressure	壳体试验 Shell test	2.0	2.4	3.75	6.0	9.6	15.0	24.0	2.93	7.55	10.0	15.0
	高压密封试验 High pressure seal test	1.1	1.76	2.75	4.4	7.04	11.0	17.6	2.07	5.52	7.31	11.03
	低压密封试验 Low pressure seal test	0.6	0.6	0.6	0.6	0.6	0.6	0.6	0.6	0.6	0.6	0.6
适用温度 Applicable temperature	-196°C~550°C(不同的工况温度选用不同的材质) Different material for different work temperature											
适用介质 Applicable medium	水、油、气及各类腐蚀性介质 (不同的介质选用有同的材质) Water, oil, gas and other causticity medium(Different material for different medium)											



压力 Pressure: PN1.0~16.0



主要外形尺寸和重量/Main outline dimensions & weight

压力 Pressure	规格 Size		阀门尺寸 Valve main dimension					重量 Weight (kg)	CV
	mm	in	L	D	D1	D2	D3		
PN1.0	15	1/2	16	52	24	15	31	0.12	-
	20	3/4	19	62	30	19	40	0.24	-
	25	1	22	72	36	24	47	0.34	-
	32	1-1/4	28	83	46	31	56	0.53	-
	40	1-1/2	31.5	93	55	39	66	0.80	-
	50	2	40	108	65	48	78	1.2	-
	65	2-1/2	46	128	80	62	95	1.8	-
	80	3	50	142	96	76	110	2.2	105
	100	4	60	162	115	95	135	3.4	189
	125	5	90	192	125	110	132	9.0	381
PN1.6	15	1/2	16	52	24	15	31	0.12	-
	20	3/4	19	62	30	19	40	0.24	-
	25	1	22	72	36	24	47	0.34	-
	32	1-1/4	28	83	46	31	56	0.53	-
	40	1-1/2	31.5	93	55	39	66	0.80	-
	50	2	40	108	65	48	78	1.2	-
	65	2-1/2	46	128	80	62	95	1.8	-
	80	3	50	142	96	76	110	2.2	105
	100	4	60	162	115	95	135	3.4	189
	125	5	90	192	125	110	132	9.0	381
PN2.5	15	1/2	16	52	24	15	31	0.12	-
	20	3/4	19	62	30	19	40	0.24	-
	25	1	22	70	36	24	47	0.34	-
	32	1-1/4	28	83	46	31	56	0.53	-
	40	1-1/2	31.5	93	55	39	66	0.80	-
	50	2	40	108	65	48	78	1.2	-
	65	2-1/2	46	128	80	62	95	1.8	-
	80	3	50	142	96	76	110	2.2	105
	100	4	60	168	115	95	135	3.8	189
	125	5	90	194	125	110	132	9.2	381
PN4.0	15	1/2	16	52	24	15	31	0.12	-
	20	3/4	19	62	30	19	40	0.24	-
	25	1	22	70	36	24	47	0.34	-
	32	1-1/4	28	83	46	31	56	0.53	-
	40	1-1/2	31.5	93	55	39	66	0.80	-
	50	2	40	108	65	48	78	1.2	-
	65	2-1/2	46	128	80	62	95	1.8	-
	80	3	50	142	96	76	110	2.2	105
	100	4	60	168	115	95	135	3.8	189
	125	5	90	194	125	110	132	9.2	381
150	6	106	224	150	127	158	15	428	
200	8	140	284	200	165	208	26	798	

对夹升降式止回阀 Wafer type lift check valve



泉舜流控
QUANSHUN FLOW CONTROL



主要外形尺寸和重量/Main outline dimensions & weight

压力 Pressure	规格 Size		阀门尺寸 Valve main dimension					重量 Weight (kg)	CV
	mm	in	L	D	D1	D2	D3		
PN1.0长系列 (Long series)	15	1/2	25	52	25	15	25	0.3	-
	20	3/4	31.5	62	30	19	30	0.45	-
	25	1	35.5	72	36	24	36	0.6	-
	32	1-1/4	40	83	43	31	43	0.8	-
	40	1-1/2	45	93	52	39	52	1.4	-
	50	2	56	108	62	48	62	2.3	-
	65	2-1/2	63	128	75	62	75	3.0	-
	80	3	71	142	90	76	90	3.8	105
	100	4	80	162	112	95	112	5.0	189
	125	5	110	192	125	110	132	11	381
PN1.6长系列 (Long series)	15	1/2	25	52	25	15	25	0.3	-
	20	3/4	31.5	62	30	19	30	0.45	-
	25	1	35.5	72	36	24	36	0.6	-
	32	1-1/4	40	83	43	31	43	0.8	-
	40	1-1/2	45	93	52	39	52	1.4	-
	50	2	56	108	62	48	62	2.3	-
	65	2-1/2	63	128	75	62	75	3.0	-
	80	3	71	142	90	76	90	3.8	105
	100	4	80	162	112	95	112	5.0	189
	125	5	110	192	125	110	132	11	381
PN2.5长系列 (Long series)	15	1/2	25	52	25	15	25	0.3	-
	20	3/4	31.5	62	30	19	30	0.45	-
	25	1	35.5	72	36	24	36	0.6	-
	32	1-1/4	40	83	43	31	43	0.8	-
	40	1-1/2	45	93	52	39	52	1.4	-
	50	2	56	108	62	48	62	2.3	-
	65	2-1/2	63	128	75	62	75	3.0	-
	80	3	71	142	90	76	90	3.8	105
	100	4	80	168	112	95	112	5.3	189
	125	5	110	194	125	110	132	12	381
PN4.0长系列 (Long series)	15	1/2	25	52	25	15	25	0.3	-
	20	3/4	31.5	62	30	19	30	0.45	-
	25	1	35.5	72	36	24	36	0.6	-
	32	1-1/4	40	83	43	31	43	0.8	-
	40	1-1/2	45	93	52	39	52	1.4	-
	50	2	56	108	62	48	62	2.3	-
	65	2-1/2	63	128	75	62	75	3.0	-
	80	3	71	142	90	76	90	3.8	105
	100	4	80	168	112	95	112	5.3	189
	125	5	110	194	125	110	132	13	381
150	6	125	224	150	127	158	19	428	
200	8	160	291	200	165	208	32	798	



† 主要外形尺寸和重量/Main outline dimensions & weight

压力 Pressure	规格 Size		阀门尺寸 Valve main dimension					重量 Weight (kg)	CV
	mm	in	L	D	D1	D2	D3		
PN6.4	15	1/2	25	62	25	15	25	0.5	-
	20	3/4	31.5	73	30	19	30	0.7	-
	25	1	35.5	83	36	24	36	1.0	-
	32	1-1/4	40	89	43	31	43	1.3	-
	40	1-1/2	45	104	52	39	52	2.0	-
	50	2	56	114	62	48	62	3.2	-
	65	2-1/2	63	138	75	62	75	4.5	-
	80	3	71	148	90	76	90	5	105
	100	4	80	174	112	95	112	7	189
	125	5	110	211	125	110	132	13	381
PN10.0	15	1/2	25	62	25	15	25	0.6	-
	20	3/4	31.5	73	30	19	30	1.0	-
	25	1	35.5	83	36	24	36	1.3	-
	32	1-1/4	40	89	43	31	43	1.6	-
	40	1-1/2	45	104	52	39	52	2.5	-
	50	2	56	120	62	48	62	3.8	-
	65	2-1/2	63	144	75	62	75	6	-
	80	3	71	154	90	76	90	7	105
	100	4	80	181	112	95	112	10	189
	125	5	110	218	125	110	132	18	381
PN16.0 JB法兰 JB Range	15	1/2	25	58	25	15	25	0.6	-
	20	3/4	31.5	69	30	19	30	0.9	-
	25	1	35.5	79	36	24	36	1.3	-
	32	1-1/4	40	92	43	31	43	1.7	-
	40	1-1/2	45	100	52	39	52	2.2	-
	50	2	56	142	62	48	62	5.6	-
	65	2-1/2	63	162	75	62	75	7.5	-
	80	3	71	176	90	76	90	9	105
	100	4	80	208	112	95	112	14	189
	125	5	110	247	125	110	132	27	381
PN16.0 GB、HG法兰 GB、HGRange	15	1/2	25	62	25	15	25	0.6	-
	20	3/4	31.5	73	30	19	30	1.0	-
	25	1	35.5	83	36	24	36	1.3	-
	32	1-1/4	40	89	43	31	43	1.6	-
	40	1-1/2	45	104	52	39	52	2.5	-
	50	2	56	120	62	48	62	3.8	-
	65	2-1/2	63	144	75	62	75	6	-
	80	3	71	154	90	76	90	7	105
	100	4	80	181	112	95	112	10	189
	125	5	110	218	125	110	132	18	381
150	6	125	258	150	127	158	30	428	
200	8	160	325	200	165	208	58	798	

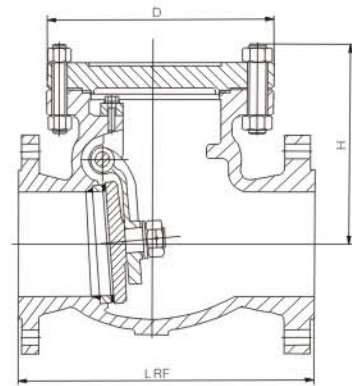


主要外形尺寸和重量/Main outline dimensions & weight

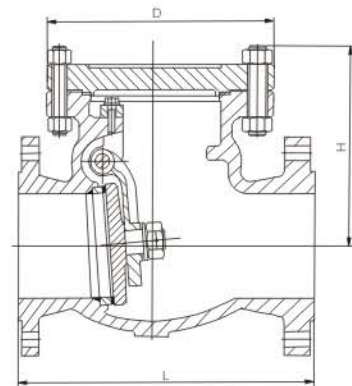
压力 Pressure	规格 Size		阀门尺寸 Valve main dimension					重量 Weight(kg)		CV
	mm	in	L(RF)	L(BW)	L(RJ)	H	RF	BW		
Class 150	40	1-1/2	165	165	178	147	13	9	-	
	50	2	203	203	216	151	17	12	-	
	65	2-1/2	216	216	229	164	23	15	-	
	80	3	241	241	254	178	29	19	285	
	100	4	292	292	305	190	40	27	520	
	150	6	356	356	368	228	78	56	1245	
	200	8	495	495	508	292	140	104	2280	
	250	10	622	622	635	304	215	178	3570	
	300	12	699	699	711	342	295	220	5300	
	350	14	787	787	800	406	408	308	6500	
	400	16	864	864	876	506	533	413	8615	
	450	18	978	978	991	584	670	530	11500	
	500	20	978	978	991	622	1000	830	14300	
	600	24	1295	1295	1308	711	1950	1710	20865	
	650	26	1295	1295	-	762	2300	2035	25165	
	700	28	1448	1448	-	838	2500	2190	29513	
	750	30	1524	1524	-	889	2600	2244	33910	
	800	32	1727	1727	-	1016	2800	2345	43130	
900	36	1955	1955	-	1092	3200	2613	61570		
Class 300	40	1-1/2	241	241	254	155	17	11	-	
	50	2	267	267	283	161	20	12	-	
	65	2-1/2	292	292	308	175	24	15	-	
	80	3	318	318	333	203	45	29	285	
	100	4	356	356	371	228	65	41	515	
	150	6	445	445	460	279	115	75	1245	
	200	8	533	533	549	342	215	156	2285	
	250	10	622	622	638	381	310	220	3575	
	300	12	711	711	727	431	470	350	5345	
	350	14	838	838	854	482	550	386	6510	
	400	16	864	864	879	508	870	574	8620	
	450	18	978	978	994	584	1025	855	11155	
	500	20	1016	1016	1035	660	1500	1175	13935	
	600	24	1346	1346	1368	762	2500	2030	20420	
	650	26	1346	1346	1372	762	2800	2275	25000	
	700	28	1499	1499	1524	889	3000	2404	28750	
	750	30	1594	1594	1619	977	3400	2710	33910	
	800	32	1727	1727	-	1016	3700	2897	42230	
900	36	2083	2083	-	1143	4300	3330	61570		
Class 600	50	2	292	292	295	161	34	25	-	
	65	2-1/2	330	330	333	175	45	33	-	
	80	3	356	356	359	203	60	44	285	
	100	4	432	432	435	228	95	64	520	
	150	6	559	559	562	304	200	134	1245	
	200	8	660	660	664	406	275	175	2210	
	250	10	787	787	791	469	450	280	3600	
	300	12	838	838	841	533	615	415	5120	
	350	14	889	889	892	609	850	550	6150	
	400	16	991	991	994	660	1150	720	8070	
	450	18	1092	1092	1095	774	1620	1120	10510	
	500	20	1194	1194	1200	889	2000	1400	12855	
	600	24	1397	1397	1407	965	3100	2220	18680	
	650	26	1448	1448	1461	1016	3800	3010	24600	
	700	28	1600	1600	1613	1066	4600	3724	29950	
750	30	1651	1651	1664	1168	5500	4528	34680		

BS系列
压力等级 Pressure: Class150-600

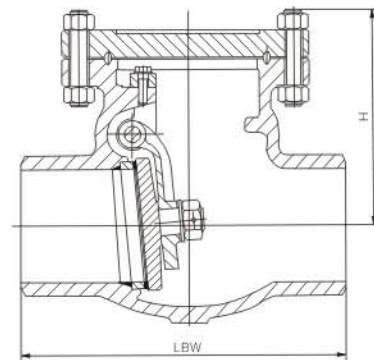
栓接阀盖
Bolted Bonnet



Class150~300



Class600



Class600

旋启式止回阀 Swing type check valve



泉舜流控
QUANSHUN FLOW CONTROL

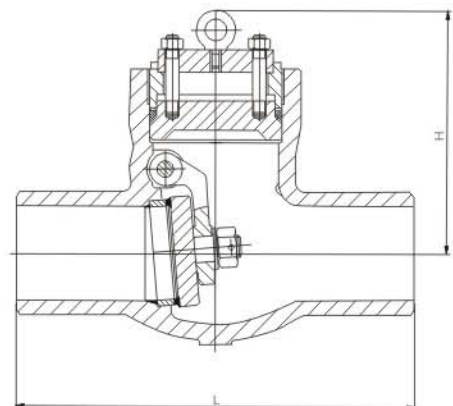
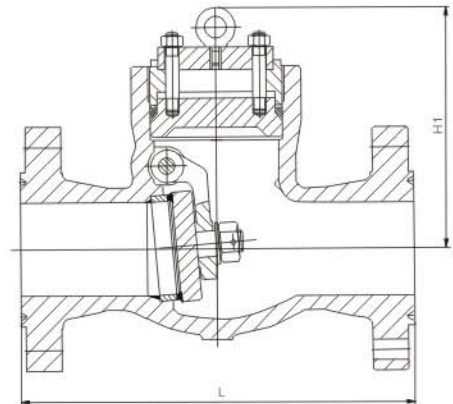


主要外形尺寸和重量/Main outline dimensions & weight

压力 Pressure	规格 Size		阀门尺寸 Valve main dimension				重量 Weight(kg)		CV	
	mm	in	L(RF)	L(BW)	L(RJ)	H	RF	BW		
Class 600	50	2	292	178	295	225	30	22	-	
	65	2-1/2	330	216	333	240	42	30	-	
	80	3	356	254	359	254	64	48	285	
	100	4	432	305	435	279	100	67	520	
	150	6	559	457	562	368	176	110	1245	
	200	8	660	584	664	393	305	205	2210	
	250	10	787	711	791	457	495	325	3400	
	300	12	838	812	841	584	680	480	5120	
	350	14	889	889	892	609	914	600	6150	
	400	16	991	991	994	685	1236	800	8070	
	450	18	1092	1092	1095	736	1994	1490	10510	
	500	20	1194	1194	1200	726	2293	1675	12855	
	600	24	1397	1397	1407	889	3180	2300	18680	
	650	26	1448	1448	1461	1016	3500	2710	24600	
	700	28	1600	1600	1613	1066	4001	3215	29950	
	750	30	1651	1651	1664	1168	4686	3710	34680	
Class 900	50	2	368	216	371	225	40	30	-	
	65	2-1/2	419	254	422	240	60	39	-	
	80	3	381	305	384	254	116	90	260	
	100	4	457	365	460	279	146	100	485	
	150	6	610	508	613	381	345	245	1140	
	200	8	737	660	740	533	595	425	2010	
	250	10	838	787	841	558	915	675	3140	
	300	12	965	914	968	609	1230	900	4590	
	350	14	1029	991	1038	736	1635	1125	5565	
	400	16	1130	1092	1140	762	2220	1600	7270	
	450	18	1219	1219	1232	863	2840	2000	9575	
	500	20	1321	1321	1334	939	3756	2700	11820	
	600	24	1549	1549	1568	1066	6000	4100	17020	
	650	26	1701	1701	1723	1143	6375	5100	-	
	700	28	1828	1828	1850	1193	7229	5750	-	
	750	30	2032	2032	2054	1270	8232	6510	-	
Class 1500	50	2	368	216	371	225	68	48	-	
	65	2-1/2	419	254	422	240	97	65	-	
	80	3	470	305	473	254	112	90	240	
	100	4	546	405	549	279	177	115	425	
	150	6	705	559	711	405	395	250	1000	
	200	8	832	711	841	567	710	470	1750	
	250	10	991	864	1000	585	1210	800	2735	
	300	12	1130	991	1146	630	1970	1350	3990	
	350	14	1257	1067	1276	750	2600	1800	4800	
	400	16	1384	1194	1407	787	3250	2200	6265	
	450	18	1537	1537	1559	885	3960	2600	8255	
	500	20	1664	1664	1686	960	4400	2700	10350	
	600	24	1943	1943	1972	1120	6800	4100	14865	
	Class 2500	50	2	451	279	454	225	118	80	-
		65	2-1/2	508	330	514	249	150	102	-
		80	3	578	368	584	254	204	120	115
100		4	673	457	683	279	352	220	195	
150		6	914	610	927	420	880	540	475	
200		8	1022	762	1038	570	1440	920	850	
250		10	1270	914	1292	1010	2652	1692	1350	
300	12	1422	1041	1445	1160	3756	2296	1970		

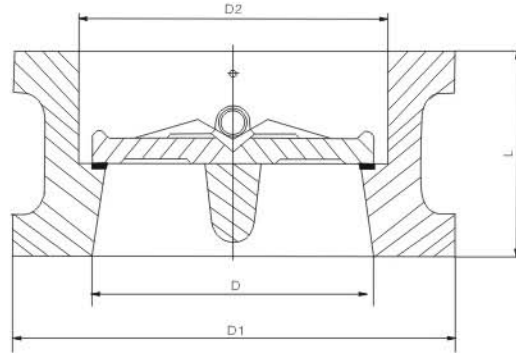
压力 Pressure: Class 600-2500

压力密封阀盖
Pressure sealed bonnet





压力 Pressure: Class 150~2500



主要外形尺寸和重量/Main outline dimensions & weight

压力 Pressure	规格 Size		阀门尺寸 Valve main dimension				重量 Weight (kg)	CV
	mm	in	L	D	D1	D2		
Class 150	50	2	60	51	103	56	2	48
	65	2-1/2	67	65	122	73	3	128
	80	3	73	80	135	88	4	150
	100	4	73	102	173	108	6	394
	125	5	86	127	195	132	8	830
	150	6	98	152	220	160	13	900
	200	8	127	203	277	210	25	1589
	250	10	146	254	337	266	39	3300
	300	12	181	305	407	310	54	3926
	350	14	184	350	448	355	80	5418
	400	16	191	400	512	405	117	8256
	450	18	203	450	547	455	138	10452
	500	20	219	500	604	505	163	14251
	600	24	222	600	715	605	331	26511
	700	28	305	700	773	700	380	33600
	750	30	305	746	824	750	425	48000
800	32	305	796	878	800	560	55200	
900	36	368	898	983	910	640	84000	
1050	42	432	1050	1142	1055	960	96000	
1200	48	524	1200	1302	1205	1400	117600	
Class 300	50	2	60	51	110	58	3	48
	65	2-1/2	67	65	128	73	4	128
	80	3	73	80	147	88	6	150
	100	4	73	102	179	108	8	394
	125	5	86	127	214	132	15	830
	150	6	98	152	249	160	18	900
	200	8	127	203	305	210	31	1589
	250	10	146	254	359	266	51	3300
	300	12	181	305	420	310	77	3926
	350	14	222	350	483	355	117	5418
	400	16	232	400	537	405	190	8256
	450	18	264	450	594	455	200	10452
	500	20	292	500	652	505	265	14251
	600	24	318	600	772	608	410	26511
	750	30	368	735	882	740	660	48000
	900	36	483	873	1044	880	1020	84000
1050	42	568	1035	1196	1045	1540	96000	
1200	48	629	1179	1365	1190	2260	117600	

对夹双瓣式止回阀 Double-disc wafer type check valve



泉舜流控
QUANSHUN FLOW CONTROL

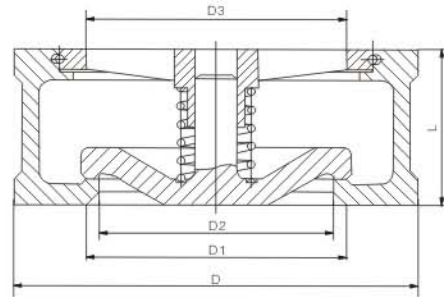
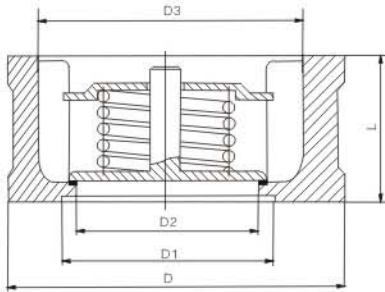


主要外形尺寸和重量/Main outline dimensions & weight

压力 Pressure	规格 Size		阀门尺寸 Valve main dimension				重量 Weight (kg)	CV	
	mm	in	L	D	D1	D2			
Class 600	50	2	60	51	110	58	4	48	
	65	2- 1/2	67	65	128	73	5	128	
	80	3	73	80	147	88	8	150	
	100	4	79	102	191	108	11	394	
	125	5	105	127	239	136	20	830	
	150	6	136	152	264	162	26	900	
	200	8	165	200	318	212	55	1589	
	250	10	213	250	398	266	95	3300	
	300	12	229	305	455	312	140	3926	
	350	14	273	337	490	355	223	5418	
	400	16	305	387	562	400	360	8256	
	450	18	362	438	610	450	395	10452	
	500	20	368	489	680	500	518	14251	
	600	24	438	591	786	600	836	26511	
Class 900	50	2	70	51	140	58	8	48	
	65	2- 1/2	83	65	162	73	11	128	
	80	3	83	80	165	88	14	150	
	100	4	102	102	204	108	20	394	
	125	5	110	127	245	136	30	830	
	150	6	159	150	286	162	42	900	
	200	8	206	200	356	212	84	1589	
	250	10	241	250	432	266	145	3300	
	300	12	292	305	495	312	220	3926	
	350	14	356	337	518	355	350	5418	
	400	16	384	387	572	400	470	8256	
	450	18	451	438	635	450	605	10452	
	500	20	451	487	695	500	820	14251	
	600	24	495	591	835	600	1050	26511	
Class 1500	50	2	70	51	140	58	8	48	
	65	2- 1/2	83	65	162	73	11	128	
	80	3	83	80	172	88	19	150	
	100	4	102	102	207	108	26	394	
	125	5	110	127	252	136	51	830	
	150	6	159	150	280	162	68	900	
	200	8	206	200	350	212	130	1589	
	250	10	248	254	433	266	210	3300	
	300	12	305	305	518	312	384	3926	
	350	14	356	337	576	355	550	5418	
	400	16	384	387	639	400	635	8256	
	Class 2500	50	2	70	42	143	48	10	48
		65	2- 1/2	83	52	166	58	18	128
		80	3	83	62	194	68	26	150
100		4	102	88	232	94	40	394	
125		5	110	100	277	106	59	830	
150		6	159	150	315	162	90	900	
200		8	206	180	385	186	150	1589	
250		10	254	225	474	232	240	3300	
300		12	305	266	547	272	440	3926	



压力 Pressure: Class 150-900



主要外形尺寸和重量/Main outline dimensions & weight

压力 Pressure	规格 Size		阀门尺寸 Valve main dimension					重量 Weight (kg)	CV
	mm	in	L	D	D1	D2	D3		
Class 150	15	1/2	25	46	25	15	25	0.28	-
	20	3/4	31.5	56	30	19	30	0.42	-
	25	1	35.5	65	36	24	36	0.56	-
	32	1-1/4	40	74	43	31	43	0.75	-
	40	1-1/2	45	84	52	39	52	1.3	-
	50	2	56	103	62	48	62	2.1	-
	65	2-1/2	63	122	75	62	75	2.8	-
	80	3	71	135	90	76	90	3.6	105
	100	4	80	173	112	95	112	4.8	189
	125	5	110	195	125	110	132	12	381
Class 300	150	6	125	220	150	127	158	17	428
	200	8	160	277	200	165	208	29	798
	15	1/2	25	52	25	15	25	0.3	-
	20	3/4	31.5	65	30	19	30	0.46	-
	25	1	35.5	72	36	24	36	0.6	-
	32	1-1/4	40	81	43	31	43	0.8	-
	40	1-1/2	45	94	52	39	52	1.5	-
	50	2	56	110	62	48	62	2.4	-
	65	2-1/2	63	128	75	62	75	3.0	-
	80	3	71	147	90	76	90	4.0	105
Class 600	100	4	80	179	112	95	112	5.5	189
	125	5	110	214	125	110	132	13	381
	150	6	125	249	150	127	158	22	428
	200	8	160	305	200	165	208	36	798
	15	1/2	25	52	25	15	25	0.4	-
	20	3/4	31.5	65	30	19	30	0.8	-
	25	1	35.5	72	36	24	36	1.0	-
	32	1-1/4	40	81	43	31	43	1.3	-
	40	1-1/2	45	94	52	39	52	1.8	-
	50	2	56	110	62	48	62	2.8	-
Class 900	65	2-1/2	63	128	75	62	75	4	-
	80	3	71	147	90	76	90	6	105
	100	4	80	191	112	95	112	11	189
	125	5	110	239	125	110	132	25	381
	150	6	125	264	150	127	158	32	428
	200	8	160	318	200	165	208	52	798
	15	1/2	25	62	25	15	25	0.6	-
	20	3/4	31.5	69	30	19	30	0.9	-
	25	1	35.5	77	36	24	36	1.2	-
	32	1-1/4	40	87	43	31	43	1.5	-
40	1-1/2	45	97	52	39	52	2.0	-	
50	2	56	140	62	48	62	5.5	-	
65	2-1/2	63	162	75	62	75	7.5	-	
80	3	71	165	90	76	90	8	105	
100	4	80	204	112	95	112	14	189	
125	5	110	245	125	110	132	27	381	
150	6	125	286	150	127	158	41	428	
200	8	160	356	200	165	208	76	798	

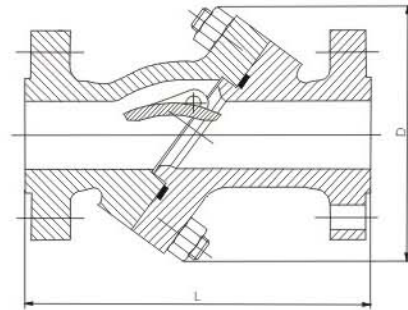
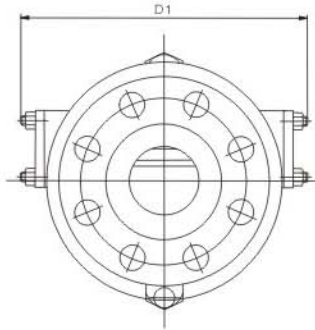
斜盘式止回阀 Oblique dish check valve



泉舜流控
QUANSHUN FLOW CONTROL



压力 Pressure: Class 150-300

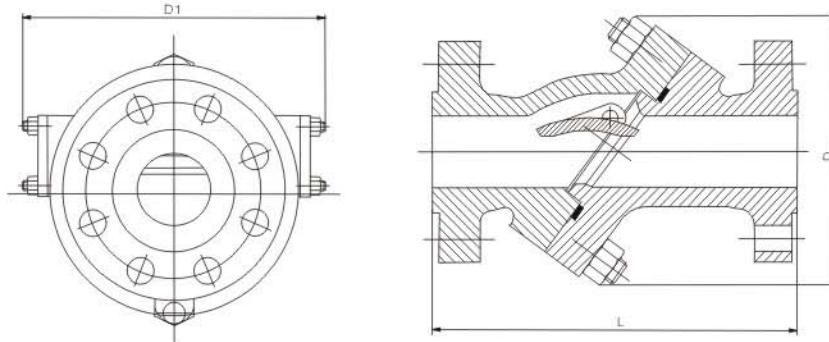


主要外形尺寸和重量/Main outline dimensions & weight

压力 Pressure	规格 Size		阀门尺寸 Valve main dimension				重量 Weight(kg)		CV
	mm	in	L(RF)	L(BW)	D	D1	WR _{RF}	W _{BW}	
Class 150	50	2	203	203	186	-	17	10	-
	65	2-1/2	216	216	217	-	23	17	-
	80	3	241	241	217	-	27	19	710
	100	4	292	292	251	337	46	34	1,300
	125	5	330	330	286	397	63	49	-
	150	6	356	356	-	-	-	-	3,100
	200	8	495	495	403	527	133	109	5,720
	250	10	622	622	476	635	221	181	8,940
	300	12	698	698	543	705	313	259	13,350
	350	14	787	787	570	724	373	313	16,275
	400	16	762	762	633	864	485	401	21,560
	450	18	838	838	705	908	651	550	28,720
	500	20	826	826	778	988	828	798	35,760
	600	24	965	965	910	1133	1310	1027	52,165
	750	30	1257	1257	1105	1365	2173	1826	86,235
900	36	1511	1511	1270	1530	3082	2610	129,500	
Class 300	50	2	267	267	205	-	26	17	-
	65	2-1/2	292	292	241	-	39	26	-
	80	3	318	318	241	-	41	27	710
	100	4	356	356	273	362	76	48	1,300
	125	5	400	400	317	416	98	75	-
	150	6	444	444	-	-	-	-	3,100
	200	8	622	622	432	559	207	153	5,720
	250	10	533	533	514	638	304	236	8,940
	300	12	711	711	610	756	467	379	13,350
	350	14	762	762	632	768	565	481	16,275
	400	16	838	838	706	914	769	576	21,560
	450	18	914	914	781	1003	989	764	28,720
	500	20	991	991	826	1035	1201	869	35,760
	600	24	1143	1143	953	1149	1846	1266	52,165
	750	30	1372	1372	1130	1365	2812	2110	86,235
900	36	1524	1524	1432	1727	5676	4536	129,500	

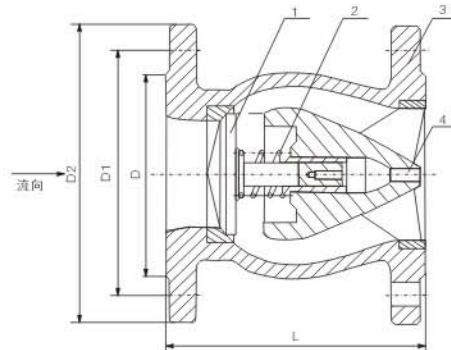


压力 Pressure: Class600-1500



主要外形尺寸和重量/Main outline dimensions & weight

压力 Pressure	规格 Size		阀门尺寸 Valve main dimension				重量 Weight(kg)		CV
	mm	in	L(RF)	L(BW)	D	D1	WRF	WBW	
Class 600	50	2	292	292	231	-	31	27	-
	65	2-1/2	330	330	254	-	50	32	-
	80	3	356	356	254	-	52	39	710
	100	4	432	432	327	406	101	74	1,300
	125	5	508	508	368	489	148	121	-
	150	6	559	559	406	514	196	134	3,100
	200	8	660	660	486	597	329	197	5,720
	250	10	787	787	562	699	469	372	8,940
	300	12	838	838	656	794	667	479	13,350
	350	14	889	889	695	841	830	606	16,275
	400	16	991	991	756	917	1157	891	21,560
	450	18	1092	1092	870	1085	1619	1310	28,720
	500	20	1194	1194	953	1165	2180	1830	35,760
	600	24	1397	1397	1111	1352	3061	2654	52,165
Class 900	80	3	381	381	279	406	80	49	710
	100	4	457	457	311	470	124	74	1,300
	150	6	610	610	365	565	199	130	3,100
	200	8	737	737	416	603	274	210	5,720
	250	10	838	838	508	718	476	345	8,940
	300	12	965	965	622	884	803	653	13,350
	350	14	1029	1029	700	879	1095	730	16,275
	400	16	1130	1130	784	1070	-	912	21,560
Class 1500	50	2	368	368	311	435	81	70	-
	65	2-1/2	419	419	311	435	100	75	-
	80	3	470	470	311	435	102	82	600
	100	4	546	546	375	540	195	122	1,070
	150	6	705	705	470	603	435	363	2,500
	200	8	832	832	565	768	771	553	4,370
	250	10	991	991	724	972	1066	850	6,850



用途及特点/Purpose and characteristics

适用于给、排水、消防、暖通系统，可安装于水泵出口处，以防止介质倒流及水锤对泵的损坏。

内部流道采用流线型设计，压力损失极小，阀瓣启闭行程很短，停泵时可快速关闭，防止巨大的水锤声，形成静音效果。

Be suitable for the water supply and drainage system, fire system and heating system. Can be installed at the exit of the water pump in order to avoid the water hammer.

The clipper-built design is adopted in the inner sprue runner. The loss of pressure is small. The opening and closing course of the flap is short. It can quickly close while the pump stops in order to avoid the large water hammer and get the effect of mute.

主要零部件材料/Main part material

序号 NO.	零件名称 Name of parts	材料 Material
1	阀体 Body	铸铁、球墨铸铁、碳钢 Cast iron, ductile iron, carbon steel
2	导流体 Diversion device	铸铁、球墨铸铁、碳钢 Cast iron, ductile iron, carbon steel
3	阀座 Seat	青铜、铬不锈钢 Bronze, chrome stainless steel
4	阀瓣 Disc	青铜、铬不锈钢 Bronze, chrome stainless steel
5	轴 Shaft	青铜、铬不锈钢 Bronze, chrome stainless steel
6	弹簧 Spring	不锈钢 Stainless steel

主要外形和连接尺寸/Main outline and connection dimension

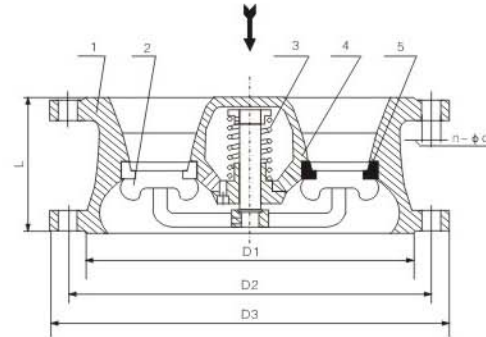
单位 Unit: mm

公称直径 Nominal diameter		L	D			D ₁			b			D ₂			n-φd		
mm	inch		PN1.0	PN1.6	PN2.5	PN1.0	PN1.6	PN2.5	PN1.0	PN1.6	PN2.5	PN1.0	PN1.6	PN2.5	PN1.0	PN1.6	PN2.5
50	-	120	165	165	165	125	125	125	20	20	20	102	102	99	4-17.5	4-17.5	4-18
65	-	150	185	185	185	145	145	145	20	20	22	122	122	118	4-17.5	4-17.5	8-18
80	-	180	200	200	200	160	160	160	22	22	24	133	133	132	8-17.5	8-17.5	8-18
100	-	240	220	220	235	180	180	190	24	24	24	158	158	156	8-17.5	8-17.5	8-22
125	-	300	250	250	270	210	210	220	26	26	26	184	184	184	8-17.5	8-17.5	8-26
150	-	350	285	282	300	240	240	250	26	26	28	212	212	211	8-22	8-22	8-26
200	-	450	340	340	360	295	295	310	28	30	30	268	268	274	8-22	12-22	12-26
250	-	500	395	405	425	350	355	370	28	32	32	320	320	330	12-22	12-26	12-30
300	-	550	445	460	485	400	410	430	28	32	34	370	370	389	12-22	12-26	16-30
350	-	575	505	520	555	460	470	490	30	36	38	430	430	448	16-22	16-26	16-33
400	-	600	565	580	620	515	525	550	32	38	40	482	482	503	16-26	16-30	16-36
450	-	650	615	640	670	565	585	600	32	40	42	532	550	548	20-26	20-30	20-36
500	-	700	670	715	730	620	650	660	34	42	44	585	585	609	20-26	20-33	20-36

CVKR型静音式止回阀 CVKR Type silencing check valve



泉舜流控
QUANSHUN FLOW CONTROL



用途及特点/Purpose and characteristics

广泛用于给排水、消防、暖通、工业系统。

本阀安装于水泵出水口处，可在水流倒流前先行快速关闭，避免产生水锤，水击声和破坏性冲击，以达到静音，防止倒法和保护设备的目的。

Be widely used for the water supply and drainage systems, fire system, heating system and industrial system.

It is installed at the exit of the water pump. You can quickly close the valve before reflurence in order to avoid the water hammer and damaging impact, prevent the reflurence and protect the equipment.

主要零部件材料/Main part material

序号 NO.	零件名称 Name of parts	材料 Material
1	阀体 Body	铸铁、球墨铸铁 Cast iron, ductile iron
2	阀盘 Disc	铸铁、球墨铸铁 Cast iron, ductile iron
3	弹簧 Spring	不锈钢 Stainless steel
4	导流体 Diversion device	不锈钢 Stainless steel

主要外形和连接尺寸/Main outline and connection dimension

单位 Unit: mm

公称通径 Nominal diameter		L	D1		D2		D3		D	
mm	inch		PN1.0	PN1.6	PN1.0	PN1.6	PN1.0	PN1.6	PN1.0	PN1.6
300		181	370	370	400	410	460	460	12-13	12-28
350	-	184	429	429	460	470	520	520	16-23	16-28
400	-	191	480	480	515	525	580	580	16-28	16-31
450	-	203	530	530	565	585	640	640	20-28	20-31
500	-	219	582	582	620	650	715	715	20-28	20-34
600		222	682	682	725	770	810	840	20-31	20-37
700	-	280	794	794	840	840	895	910	24-31	24-37
800		356	901	901	950	950	1015	1025	24-34	24-40
900	-	368	1001	1001	1050	1050	1125	1125	28-40	28-40
1000	-	432	1112	1112	1160	1170	1230	1255	28-43	28-43
1200	-	524	1328	1328	1380	1390	1455	1485	32-49	32-49

HDH49X型微阻缓闭蝶式止回阀 HDH49X Type tiny trag dashpot butterfly check valve



泉舜流控
QUANSHUN FLOW CONTROL



用途及特点/Purpose and characteristics

本阀是安装于管路中或水泵出口处用于泵停机时防止管路中压差水锤冲击水泵倒转的安全装置。具有结构新颖、体积小、重量轻、流体阻力小、密封可靠、启闭平稳、使用寿命长、有较好节能效果等特点。

适用于给排水、消防、暖通等系统的有关管路或泵出口处防止介质倒流所产生的水锤对泵与管路的损害，形成消声效果。

This valve is a safety device mounted in the pipeline or pump outlet to prevent the pump from imversed running due to the differential water hammer's shock in the pipeline when the pump stops and features a brand-new structure, small volume, light weight, small fluid resistance, reliable stable open-close, long duration, better energy-saving effect.

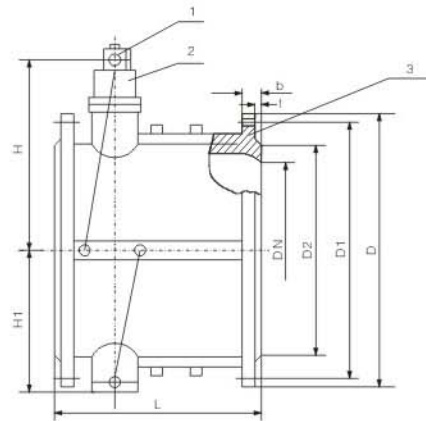
Suitable for the pipeline related to water supply and drainage, fire-fighting etc. Systems of the pump outlet to prevent both pump and pipeline from being damaged due to the water hammer produced when the medium flows back and form the silencing effect.

主要零件材料/Material for main parts

零件名称 Name of parts	阀体 Body	阀瓣 Disc	阀杆、油缸、油塞 Stem, Oil cylinder, Oil cork	弹簧 Spring	阀座 Seat
材质 Material	铸铁CI、铸钢 Cast steel, Cast iron	碳钢、不锈钢 Bowl-shaped steel, Stainless steel	不锈钢 Stainless steel	不锈钢 Stainless steel	丁晴橡胶 NBR

主要技术参数/Main technical parameters

公称压力PN(MPa) Nominal pressure	1.0	1.6	
试验压力 Test pressure (Mpa)	壳体强度 Shell strength	1.5	2.4
	密封性能 Sealing performance	1.1	1.76
工作温度(°C) Working temperature	≤80		
适用介质 Applicable medium	清水、污水、海水 Clean-water, Sewage, Sea		
缓闭时间(S) Slow-dashpot time	0~60		



主要外形及连接尺寸/Main outline and connection dimensions

公称通径 DN Nominal diameter	L	H	H1	D		D1		D2		B		F	N-φd	
				PN1.6	PN2.5	PN1.6	PN2.5	PN1.6	PN2.5	PN1.6	PN2.5		PN1.6	PN2.5
40	140	200	88	145	145	110	110	85	85	16	18	3	4-18	4-18
50	150	215	98	160	160	125	125	100	100	16	20	3	4-18	4-18
65	170	225	108	180	180	145	145	120	120	18	22	3	4-18	8-18
80	180	235	118	195	195	160	160	135	135	20	22	3	8-18	8-18
100	190	280	130	215	230	180	190	155	160	20	24	3	8-18	8-23
125	200	290	148	245	270	210	220	185	168	22	28	3	8-18	8-25
150	210	310	172	280	300	240	250	210	218	24	30	3	8-23	8-25
200	230	350	210	335	360	295	310	265	278	26	34	3	12-23	12-25
250	250	415	240	405	425	355	370	320	332	30	36	3	12-25	12-30
300	270	450	264	460	485	410	430	375	390	30	40	4	12-25	16-30
350	290	480	297	520	550	470	490	435	448	34	44	4	16-25	16-34
400	310	550	324	580	610	525	550	485	505	36	48	4	16-30	16-34
450	330	585	351	640	660	585	600	545	555	40	50	4	20-30	20-34
500	350	640	379	705	730	650	660	608	610	44	52	4	20-34	20-41
600	390	720	434	840	840	770	770	718	718	48	56	5	20-41	24-41
700	430	780	491	910	955	840	875	788	815	50	60	5	24-41	24-48
800	470	840	549	1020	1070	950	990	898	930	52	64	5	24-41	24-48
900	510	990	600	1120	1180	1050	1100	998	1025	54	66	5	28-41	28-54
1000	550	1050	655	1255	1305	1170	1210	1110	1140	56	68	5	28-48	28-58
1200	630	1210	770	1485	1525	1390	1420	1325	1350	58	72	5	32-54	32-58



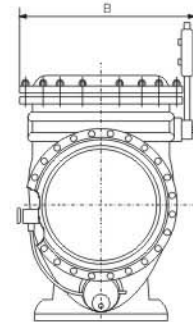
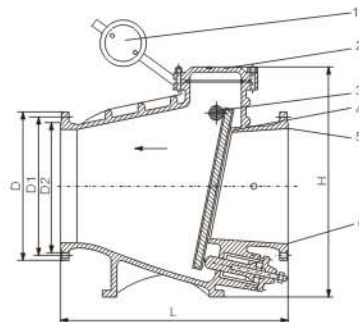
用途及特点/Purpose and characteristics

本阀安装在管路中或泵的出口处，用于泵停机时防止介质倒流产生水锤冲击泵倒转的安全装置。具有阀瓣轻开启度大，节电效果显著，流体阻力小，水锤消除机构设计新颖，密封性能稳定可靠、耐磨损、使用寿命长、运行平稳、无振动、无噪声等特点。

适用于给排水、消防、暖通等系统的管道中或水泵出口处防止介质倒流产生水锤对管路或泵产生危害。

This valve is safety device mounted in the pipeline or on the pump outlet to prevent the pump from inversed running due to the water hammer's shock produced in the side-flow of the medium when the medium when the pump stops and features a light flap, hig opening, notable power saving, small fluid resistance, new-style of water hammer removal mechanism's design, stable and reliable seal performance, wearable, long duration, stable running, without vibration and noise etc.

Suitable for the pipeline in the water supply and drainage, fire-fighting, warming etc. systems or the pump outlet to prevent both pump and pipeline from danger due to the water hammer produced in medium's bace-flow.



主要零件材料/Material of main parts

零件名称 Name of parts	阀体、阀盖 Body, Bonnet	阀瓣 Disc	阀轴 Valve shaft
材质 Material	灰铸铁、球墨铸铁、碳钢 Gray cast iron, Ductile Iron, Carbon steel	橡胶结合件 Rubber assembly	不锈钢 Stainless steel

主要技术参数/Main technical parameters

公称通径DN(mm) Nominal diameter	40~1200		
公称压力PN(MPa) Nominal pressure	1.0	1.6	2.5
试验压力 Test pressure (Mpa)	壳体强度 Shell strength	1.5	3.75
	密封性能 Sealing performance	1.1	2.75
工作温度(°C) Working temperature	≤80(根据用户要求可达200°C) Can be up to 200°C upon the user's requirement		
适用介质 Applicable medium	清水、污水、海水 Clean-water, Sewage, Sea		

主要外形及连接尺寸/Main outline and connection dimensions

DN	L	H	B	D			D1			B			D2			N-φd		
				PN1.0	PN1.6	PN2.5	PN1.0	PN1.6	PN2.5	PN1.0	PN1.6	PN2.5	PN1.0	PN1.6	PN2.5	PN1.0	PN1.6	PN2.5
40	200	300	220	150	150	150	110	110	110	18	18	18	88	88	84	4-17.5	4-17.5	4-18
50	230	300	270	165	165	165	125	125	125	20	20	20	102	102	99	4-17.5	4-17.5	4-18
65	290	320	290	185	185	185	145	145	145	20	20	22	122	122	118	4-17.5	4-17.5	8-18
80	310	354	300	200	200	200	160	160	160	22	22	24	133	133	132	8-17.5	8-17.5	8-18
100	350	350	320	220	220	235	180	180	190	24	24	24	158	158	156	8-17.5	8-17.5	8-22
125	400	380	340	250	250	270	210	210	220	26	26	26	184	184	184	8-17.5	8-17.5	8-26
150	480	500	410	285	285	300	240	240	250	26	26	28	212	212	211	8-22	8-22	8-26
200	500	580	450	340	340	360	295	295	310	28	30	30	268	268	274	8-22	12-22	12-26
250	600	670	550	395	405	425	350	355	370	28	32	32	320	320	330	12-22	12-26	12-30
300	700	730	580	445	460	485	400	410	430	28	32	34	370	370	389	12-22	12-26	16-30
350	800	820	630	505	520	555	460	470	490	30	36	38	430	430	448	16-22	16-26	16-33
400	900	920	700	565	580	620	515	525	550	32	38	40	482	482	503	16-26	16-30	16-36
450	1000	950	800	615	640	670	565	585	600	32	40	42	532	550	548	20-26	20-30	20-36
500	1100	1100	900	670	715	730	620	650	660	34	42	44	585	585	609	20-26	20-33	20-36
600	1300	1200	990	780	840	845	725	770	770	36	48	46	685	685	720	20-30	20-36	20-39
700	1400	1550	1120	895	910	960	840	840	875	40	54	50	800	800	820	24-30	24-36	24-42
800	1500	1700	1300	1015	1025	1085	950	950	990	44	58	54	905	905	928	24-33	24-39	24-48

HH47、H47XF、HDH47X蝶式缓冲止回阀 HH47、H47XF、HDH47X Butterfly dashpot check valve



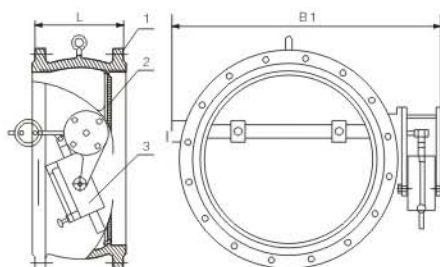
泉舜流控
QUANSHUN FLOW CONTROL



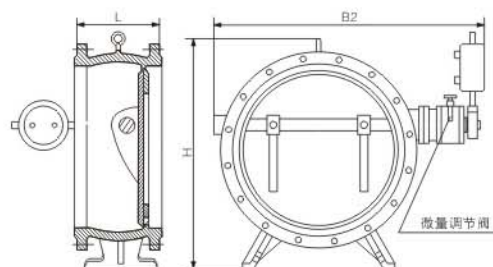
结构特点/Structure characteristics

本公司生产的H47X、H47H、HH47H、H47XF、HDH47X型蝶式缓冲止回阀，主要用于工业供水、污水处理厂的水泵出口处，防止管网中介质逆流。自动消除破坏性水锤，从而保证水泵和管路不受损坏。该阀主要由阀体、阀瓣、缓冲装置和微量调节阀组成。该产品具有结构新颖、体积小、流体阻力小、运行平稳、密封可靠、耐磨损、缓冲性能好等特点，是工业用水和城市排污的最佳产品。

Model H47X, H47H, HH47X, HH47H, HDH47X butterfly buffering check valves are used in the outlet of the water pump of industrial water supply and sewage treatment plant to prevent the medium inside of the pipe medium from going back and automatically remove the destructive water hammer so as to ensure both pump and pipeline not to be damaged. It consists of body, disc, buffer and micro-adjusting valve and features a brand new structure, small volume, small fluid resistance, reliable seal, wearable and good buffering performance. Really the best product for industrial use of water and city sewage drainage.



I型 Model I



II型 Model II

主要零件材料/Material of main parts

零件名称 Name of parts	阀体 Body	蝶板 Butterfly board	密封圈 Seal-ring	阀杆 Stem	填料 Packing
材料 Material	灰铸铁碳钢 Gray cast iron carbon steel	灰铸铁、铸钢、球墨铸铁 Gray cast iron, cast steel, ductile iron	丁腈耐油橡胶、氯丁橡胶 Oil-resisting chemigum, chloroprene rubber	不锈钢 Stainless steel	聚四氟乙烯 PTFE

主要技术参数/Main technical parameters

型号 Model	公称压力 PN(MPa)	试验压力(MPa) Test pressure		工作压力(MPa) Working pressure	介质温度(°C) Medium temperature	适用介质 Suitable media
		壳体 Casing	密封 Seal			
H47X、H47H、HH47X、 HH47X、H47XF、HDH47X	1.0	1.5	1.1	1.0	0~80°C	水、油品 海水、污水 Water, oil good, sea water, sludge
	1.6	2.4	1.75	1.6		
	2.5	3.75	2.75	2.5		

主要外形及连接尺寸/Main outline and connection dimensions

DN	L	H	B1	B2	D			D1			D2			N-φd		
					PN1.0	PN1.6	PN2.5	PN1.0	PN1.6	PN2.5	PN1.0	PN1.6	PN2.5	PN1.0	PN1.6	PN2.5
200	230	550	540	600	335	335	360	295	295	310	265	265	278	8-18	12-23	12-25
250	250	630	600	700	390	405	425	350	355	370	320	320	332	12-18	12-25	12-30
300	270	690	650	740	440	460	485	400	410	430	368	375	390	12-23	12-25	16-30
350	290	780	710	800	500	520	550	460	470	490	428	435	448	12-23	16-25	16-34
400	310	860	770	870	565	580	610	515	525	550	482	485	505	16-23	16-30	16-34
450	330	910	830	920	615	640	660	565	585	600	532	545	555	16-23	20-30	20-34
500	350	980	900	1000	670	705	730	620	650	660	585	608	610	16-23	20-34	20-41
600	390	1070	1090	1250	780	840	840	725	770	770	685	718	718	20-25	20-41	24-41
700	430	1220	1200	1360	895	910	955	840	840	875	800	788	815	24-25	24-41	24-48
800	470	1320	1320	1480	1010	1020	1070	950	950	990	905	898	930	24-30	24-41	24-48
900	510	1430	1420	1580	1110	1120	1180	1050	1050	1090	1005	998	1025	24-30	28-41	28-54
1000	550	1550	1550	1700	1220	1255	1305	1160	1170	1210	1115	1110	1140	28-30	28-48	28-58
1200	630	1800	1780	1950	1450	1485	1525	1380	1390	1420	1325	1325	1350	32-30	32-54	32-58
1400	710	1980	2000	2175	1675	1685	1750	1590	1590	1640	1525	-	-	36-30	-	-



主要特点/Main features

DX7K41H型蓄能罐式液控缓闭金属密封止回阀和DX7K41X型蓄能罐式液控缓闭橡胶密封止回阀是我公司引进国外先进技术研制而成的新产品。它兼有闸阀和止回阀的功能，具有较完善的液压系统和电气控制系统，即可现场操作，也可远距离操作实现泵阀连锁程序控制及微机集中控制。能取代重锤式液控蝶阀，主要将重锤势能变为流体蓄能，节省了长期运行支承重锤所耗的能量，改善了液压系统的保压性能。阀门可以全开、全闭、半开、也可以快关和缓闭，能按用户实际要求设定程序，有效的防止生产破坏性水锤，保证管线安全运行，是一种理想的控制设备。

DX7K41H Energy saving tank type hydraulic control dashpot metal sealed check Valve and dx7k41x energy saving tank type hydraulic control dashpot rubber sealed cheak valve are new products made with imported overseas advanced technology by our company. It has both the function of gate valves and check valve. With rather complete hydraulic system and electric control system, it can be operated on spot or at a long distance to realize pump-valve programmed linkage and computer integrated control. It can replace heavy hammer hydraulic butterfly valve. By changing heavy hammer momentum into hydraulic saved energy, it saves energy that is lost in operation to support the heavy hammer, and improves the pressure protection of hydraulic system. The valves are available in full open, full close, semi open or quick open and slow close. It can preset the program according to customer's requirements, which effectively avoids destructive water hammer, and protect the pipeline operation. It is an ideal control equipment.

性能规范和型号意义

Performance specifications and code

开阀时间 Time of valve open (s)		阀门通径 Valve diameter		可调 Adjustable
		≤1200	≤1400	
关阀时间 Time of valve close (s)	快关 Quick close	10-60	15-60	可调 Adjustable
	慢关 Slow close	2-60	4-60	
关阀角度 Angle of valve closing	快关 Quick close	65° ± 10°		
	慢关 Slow close	25° ± 10°		

产品型号说明/Model illustration



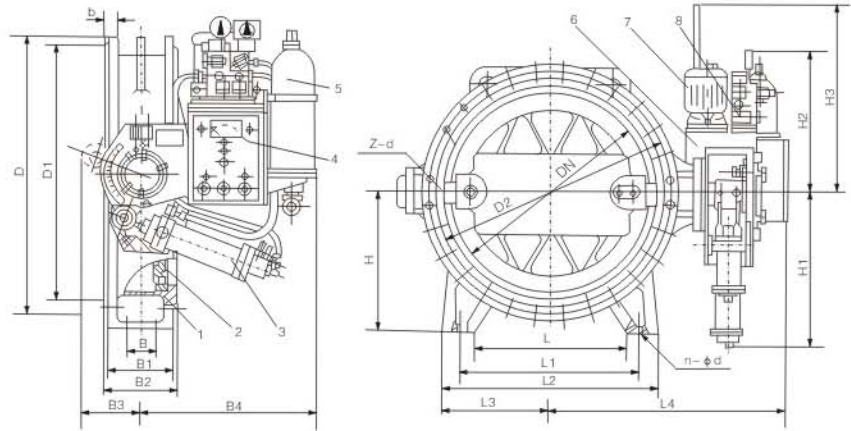
DX7K41H和DX7K41X型外形尺寸及连接尺寸/Outline and connection dimensions of DX7K41H and DX7K41X

PN (MPa)	DN (mm)	D	D1	b	L	L1	L2	L3	L4
1.0	200	340	295	28	-	-	-	168	720
	250	395	350	28	-	-	-	200	770
	300	445	400	28	-	-	-	235	795
	350	505	460	30	260	340	420	265	820
	400	565	515	32	310	410	510	296	900
	450	615	565	32	320	420	520	320	920
	500	670	620	34	350	450	530	345	1010
	600	780	725	36	400	565	640	414	1055
	700	895	840	40	630	650	760	530.5	1070
	800	1015	950	44	600	740	860	601.5	1130
	1000	1230	1160	50	728	900	1040	735	1240
0.6	900	1115	1050	46	668	820	950	664	1180
	1200	1455	1380	56	868	1070	1240	1097.5	1250
	1400	1630	1560	44	1000	1230	1430	873	1440
	1600	1830	1760	48	1130	1400	1620	1212.2	1540
	1800	2045	1970	50	1260	1550	1800	957.5	1690
0.25	2000	2265	2180	54	1280	1700	1980	1347.5	1810
	2200	2475	2390	60	1620	2040	2340	1660	2100
	2400	2605	2540	38	1740	2070	2400	1687.5	2310
	2600	2805	2740	40	1940	2270	2600	1887.5	2410

蓄能罐式液控缓闭止回蝶阀
Energy saving tank type hydraulic control dashpot
check butterfly valve



泉舜流控
QUANSHUN FLOW CONTROL



主要零件材料/Material of main parts

部件名称 Part name		阀体蝶板 Body disc	阀轴 Valve axis	阀体密封圈 Body seat ring	蝶板密封圈 Disc seal ring
材料 Material	DX7K41X	灰铸铁 Gray cast iron	不锈钢 Stainless steel	黄铜 Brzone	丁晴耐油橡胶 Butyronitrile oil-proof rubber
	DX7K41H	碳素钢 Carbon steel	不锈钢 Stainless steel	合金钢 Alloy steel	不锈钢 Stainless steel

主要连接尺寸 Main connection dimensions (mm)

B	B1	B2	B3	B4	H	H1	H2	H3	Z-d	n-φd
-	-	152	250	670	-	620	730	1300	8-22	-
-	-	250	250	670	-	620	730	1300	12-22	-
-	-	270	250	690	-	620	730	1300	12-22	-
-	100	290	250	690	320	620	730	1300	16-22	4-18
-	120	310	285	760	340	675	750	1300	16-26	4-22
-	134	330	285	760	370	675	750	1300	20-26	4-22
-	136	350	285	760	400	675	750	1300	20-26	4-26
-	158	390	285	760	460	675	750	1300	20-30	4-26
-	210	430	315	805	520	885	820	1300	24-30	4-26
-	220	470	315	805	580	885	820	1300	24-33	4-30
-	220	510	315	825	630	885	820	1300	28-33	4-30
130	280	550	355	855	690	925	890	1300	28-36	4-30
160	330	630	355	855	810	935	890	1500	32-39	4-33
180	370	710	405	920	920	1010	930	1500	36-36	4-36
220	420	790	405	920	1040	1010	970	1500	40-36	4-36
260	470	870	460	960	1140	1080	1460	1500	44-39	4-39
290	520	950	560	1030	1250	1080	1460	1500	48-42	4-39
300	530	1000	580	1150	1350	1230	1520	1700	52-42	4-39
690	1010	1100	580	1150	1420	1230	1520	1700	56-33	4-42
700	1110	1200	580	1150	1520	1230	1520	1700	60-33	4-42



产品结构特征/Products characteristics

本蝶阀适用于介质为水的泵出口管路上，作为闭路取代闸阀和止回阀，用来避免和减少管路系统中介质的倒流及产生过大的水锤，以保护管路系统。

本阀靠液压驱动开启，靠重锤势能关闭，启闭灵活可靠。该阀安装在泵后，可代替闸阀(蝶阀)和止回阀两台阀门。且流阻系数仅为上述两台阀门流阻系数的30%。因此，该项类阀门为节能产品。关闭时，液控装置分快关、慢关两个阶段：前60°为快关，后30°为慢关，根据工况不同，可调节快慢关时间和快、慢关切换角度，以防止发生较大水锤。该阀还具有保压功能：本蝶阀的液压系统中设有蓄能器，蓄有压力油，补充系统的泄漏，并可自动补压。同时具有自动复位功能，当阀门开度降低(重锤下落)15°时，油泵启动，自动复位。备用复位装置，本蝶阀开启后，当液压系统中出现微量的内漏蓄能补充，压力降至一定值时，继电器发令补压，为防止压力继电器失灵，设有行程开关复位装置，即在本阀开启位置有保压和保位双位保护功能。

The butterfly valve, acting as closing replacement of gate valve and check valve, is applied to water outlet pipeline of pump, with a view to avoiding and reducing the regrowing of water in the pipelines and its overlarge water hammer, thus pipeline can be well protected.

It is one kind of energy-saving products, for its low flow rate 30% of the rate of gate valve (butterfly valve) and check valve which can be replaced by it after it is equipped to the pump, its function of on and off is flexible, reliable, in which started by hydraulic driver and closed by the potential energy of heavy hammer. There are two stages in the hydraulic apparatus when performing close function, i.e. fast close (in the front 60 angle) and delay close (at 30 backward), the close time and the shifting angle of both modes can be regulated according to various operation conditions so as to avoid large water hammer. Besides, the valve has function of maintaining pressure, in which the accumulator equipped in the hydraulic system is accumulating pressure oil to make up the leakage of the system and automatically mend the pressure. With the function of auto reset, this function is effected on while oil pump is actuated as 15 of the opening reduction (just as falling of heavy hammer) of the valve, therefore, when the pressure is reduced to a specific value which is occurred in the period of complementarity of potential energy for little inner leakage in the hydraulic system after the valve is started up, the makeup order will be issued by relay, the reset apparatus is to avoid the failure of the pressure relay, thus the both functions for protection is set on the starting position of the valve.

主要技术参数/Main technical parameters

公称压力：0.25~2.5MPa
公称通径：500~2400mm
适用介质：水
适用温度：0~80°C

Nominal pressure: 0.25~2.5MPa
Nominal diameter: 500~2400mm
Applicable medium: Water
Applicable temperature: 0~80°C

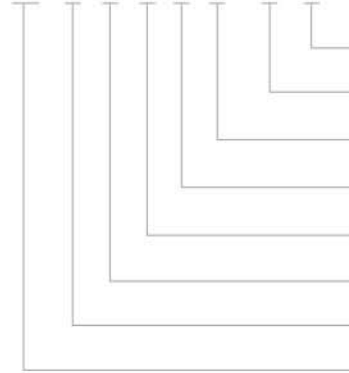
采用标准/Applicable standard

法兰连接：GB/T 17241.6-1998; GB/T9113-2000;
结构长度：GB/T12221-1989;
试验标准：GB/T13927-1992;

Flange: GB/T 17241.6-1998; GB/T9113-2000;
Face-to-face dimension: GB/T12221-1989;
Inspecting standard: GB/T13927-1992

产品型号说明/Model illustration

HD 7 B 4 1 X - 10 C



阀门材料：C-碳钢，Q-球墨铸铁、灰铸铁省略
Valve material code: C-Carbon steel, Q-Spheroidal cast iron, Gray cast Iron
公称压力代号
Nominal pressure code
密封材料：X-丁腈橡胶，F-氟橡胶
Seal material code: X-Rubber, F-FPM
结构形式：1-垂直板式，3-双偏心；5-三偏心
Structure type code: 1-Vertical plate, 3-Double eccentric, 5-Trip-eccentric
连接方式：4-法兰，6-焊接，7-对夹
Connection type code: 4-Flange type, 6-Welded, 7-Wafer type
功能代号：S-锁定型，B-保压型，Q-全液控型
Function code: S-Lock already type, B-Protect to press the type, Q-Presses to control the type
驱动方式：7-液动
Drive type code: 7-Hydraulic actuator
阀门类型：HD-止回蝶阀
Valve type: HD-Check butterfly valve

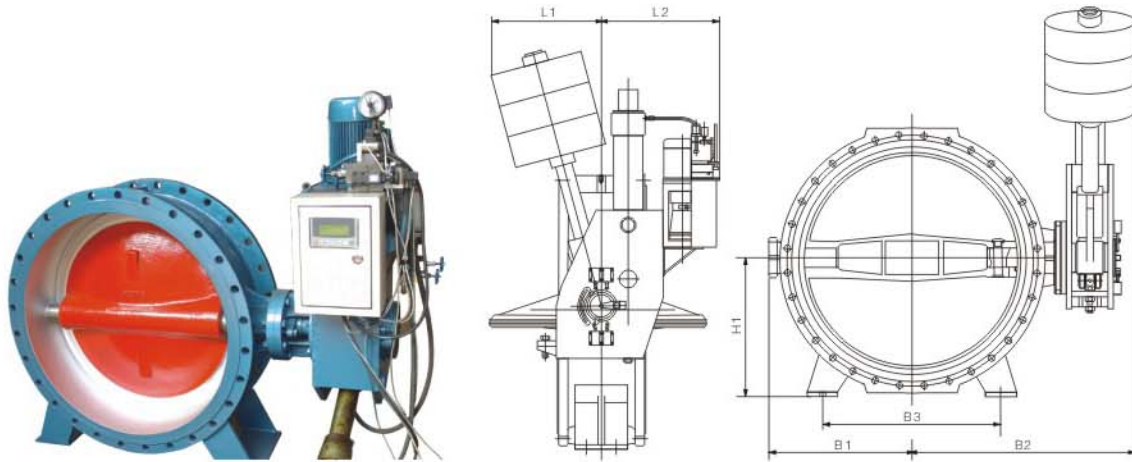
主要零部件材料/Material of main parts

序号NO.	零件名称 Accessory name	材料 Material
1	阀体、蝶板 Body、Disc	灰铸铁、球墨铸铁、碳钢 Gray cast iron, spheroidal graphite cast iron, carbon steel
2	密封圈 Sealing ring	不锈钢、NBR Stainless steel NBR
3	阀轴 Valve axis	不锈钢 Stainless steel
4	填料 Packing	NBR

液控止回阀 Hydraulic control check valve



泉舜流控
QUANSHUN FLOW CONTROL



† HD7_B 41X 主要外形尺寸/Main outline dimension

DN	PN(MPa)	L1	L2	B1	B2	B3	H1	Z-φd
500	1.0	570	950	414	952	952	350	20-26
600	1.0	750	778	542	1017	1017	405	20-30
700	1.0	750	778	510	1215	1215	460	24-30
800	1.0	582	950	595	1165	1165	520	24-33
900	1.0	600	950	660	1530	1530	570	28-33
1000	1.0	681	966	740	1130	1130	625	28-36
1200	0.6	690	800	840	1760	1760	710	32-33
1200	1.0	780	1236	880	1853	1853	735	32-39
1400	0.6	780	1236	977	1721	1721	820	36-36
1400	1.0	780	1236	1158	1615	1615	820	36-42
1600	0.25	770	910	1075	2040	2040	920	40-36
1600	0.6	780	1219	1113	1832	1832	920	40-36
1800	0.25	780	1219	1233	1805	1805	1070	44-39
1800	0.6	780	1219	1233	1905	1905	1070	44-39
2000	0.25	897	905	1363	2285	2285	1170	48-42
2000	0.6	900	956	1465	2285	2285	1170	48-42
2200	0.25	1030	1123	1631	2492	2492	1300	52-42
2200	0.6	1130	1223	1631	2592	2592	1300	52-42
2400	0.25	1235	1365	1775	2585	2585	1355	56-42
2400	0.6	1295	1395	1775	2600	2600	1355	56-42

注：可根据用户要求从DN250-3000生产(GB12221-89)长系列，从DN1200-3000带底脚的需注明。

Note: The production of the series GB12221-89 range of DN250-3000 can be done according to the requirements of customer. It should be indicated whether equipped with foot or not for the range of DN1200-3000.



用途/Purpose

该阀门适用于电站汽轮机的给水预热系统或其它要求快速关闭的工业管线系统，在气源压力（0.5~0.7Mpa）或回位弹簧的作用下迅速关闭（关闭时间≤0.5s）以防止介质倒流损坏汽轮机和其它装置。

适用介质：水、蒸气

The valve is used in supply water preheating system of stem turbine in power station or other industrial pipeline system requiring fast close. It can fast close with air pressure (0.5~0.7Mpa) or return spring (close time less than 0.5 second) to prevent medium from reverse flow and steam turbine and other device from damage.

Suitable medium: Water, Steam

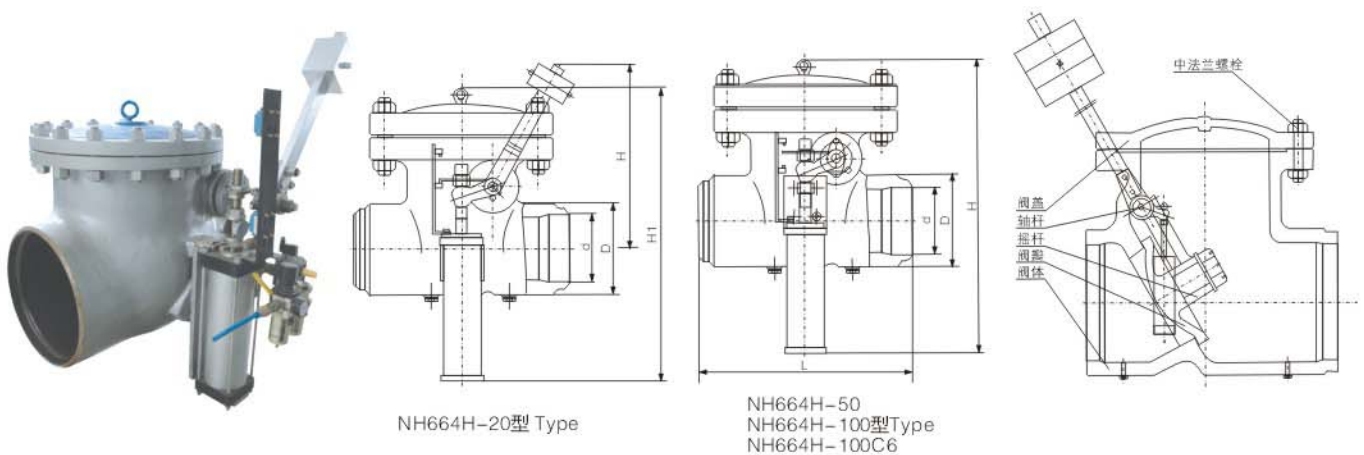
主要性能规范/Main technical specification

型号 Model	公称压力 Nominal class	强度试验压力 Strength test pressure	密封试验压力 Sealing test pressure
	MPa	MPa	MPa
NH664H-20	2.0	3.0	2.20
NH664H-50	5.0	7.5	5.50
NH664H-100 NH664Y-100C6	10.0	15.5	11.0

压力温度基准/Pressure-temperature ratings

型号 Model	工作温度 Working temperature °C									
	38	200	260	316	371	399	427	454	500	540
NH664H-20	2.0	1.4	1.2	1.0	0.9	0.65	0.55	-	-	-
NH664H-50	5.1	4.4	4.2	3.9	3.75	3.55	2.9	-	-	-
NH664H-100	10.2	8.5	8.5	7.7	7.5	7.1	5.8	6.85	5.5	-
NH664Y-100C6	10.3	9.3	9.0	8.2	8.0	7.5	7.1	-	-	3.0

外形尺寸及重量/Outline dimensions and weight





NH664H-20

口径 Size (mm)	外形尺寸 Outline dimension(mm)					重量 Weight (Kg)
	L	d	D	H	H1	
450	740	428	482	990	755	625
500	790	478	532	990	852	760
600	915	574	634	990	1150	1080
700	1040	678	726	990	1240	1250

NH664H-50

口径 Size (mm)	外形尺寸 Outline dimension(mm)				重量 Weight (Kg)
	L	D	D	H	
200	526	198	248	815	240
300	610	296	332	845	360
350	838	332	380	889	620

NH664H-100

口径 Size (mm)	外形尺寸 Outline dimension(mm)				重量 Weight (Kg)
	L	d	D	H	
250	680	236	302	904	390
500	1020	478	532	1240	1490

NH664H-100C6

口径 Size (mm)	外形尺寸 Outline dimension(mm)				重量 Weight (Kg)
	L	d	D	H	
250	526	188	248	815	280
500	680	236	302	904	390

主要零件材料/Material of main parts

零件名称 Part name	NH664H-20 NH664H-50 100	NH664Y-100C6
阀体、阀瓣、阀盖、摇杆 Body, Disc, Bonnet, Hinge pin	WCB	WC6
轴 Shaft	2Cr13	20Cr1Mo1V1A
中法兰螺栓 Bolt/Nut	35/45	20Cr1Mo1V1A/45